

0:21 / 11:13

Phonics Kids 5B Unit 2 | Consonant Digraph "ch" | ch, tch | -ch, ch- |

Следующее

# WHERE?



**Where are the mice?**

You have five minutes to find them.  
There are sixteen mice.

IN FRONT OF  
UNDER  
IN  
BEHIND  
BETWEEN  
NEXT TO  
ON  
ON TOP OF



Use these words:

over

door

cupboard

salt

sink

plate



drawer

cat

glass

chair

cup

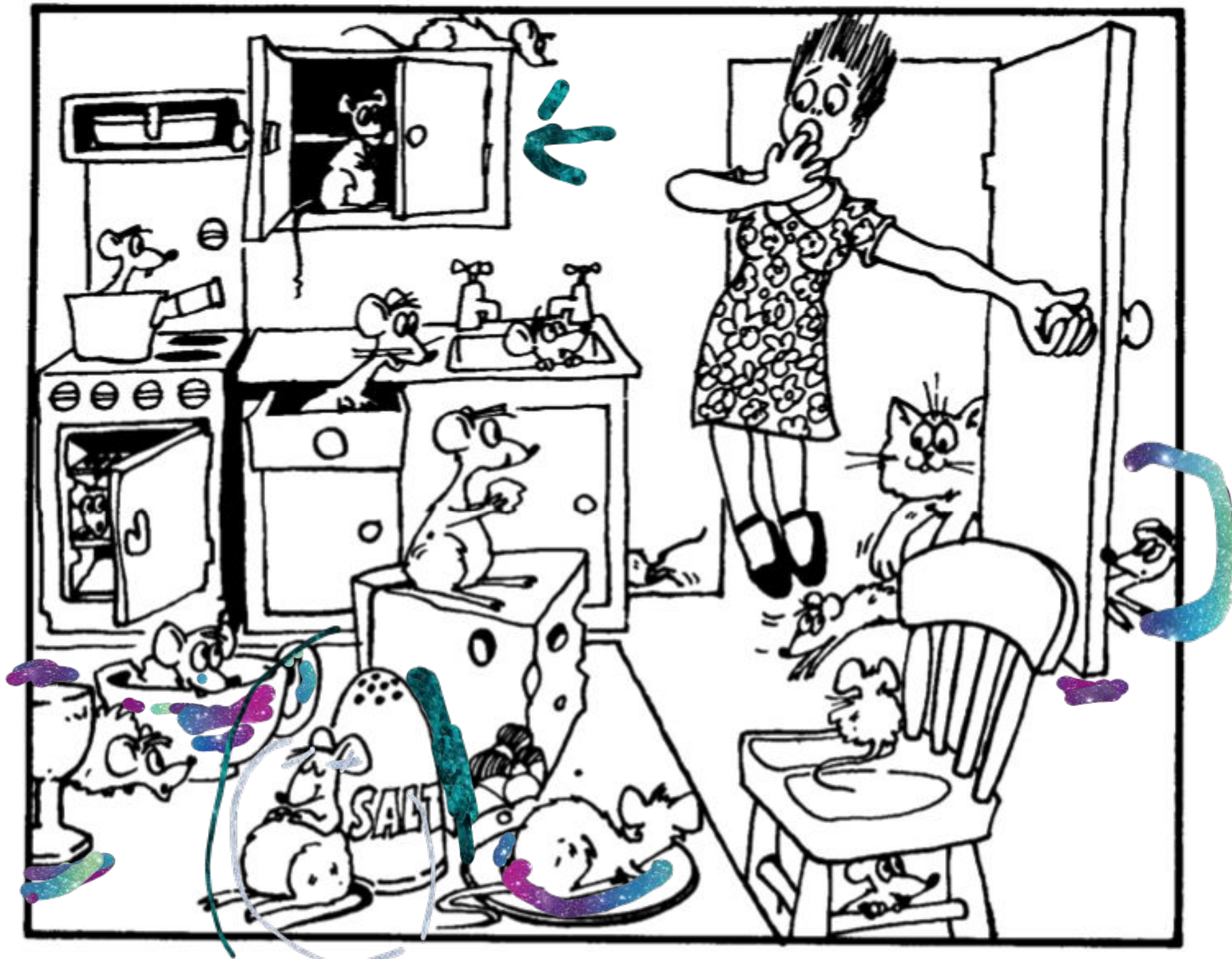
saucepan

piece of cheese



skinning

15



There's a mouse in the cupboard.

There's a mouse behind the door.



# Prepositions of Place

**At**



**Between**



**In**



**Behind**

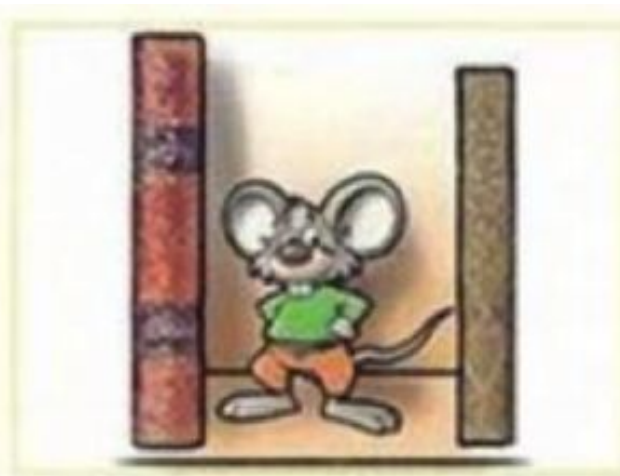


**Under**

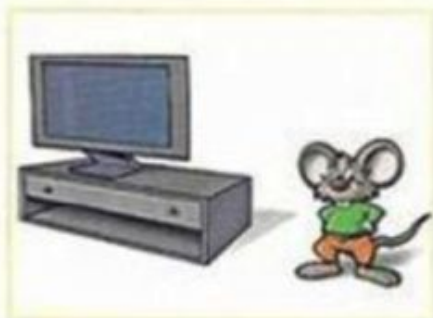


**On**





**Near**



**In front of**



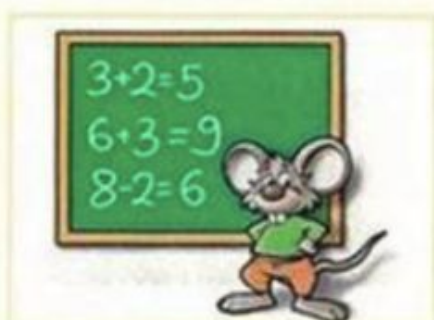
**Next to**



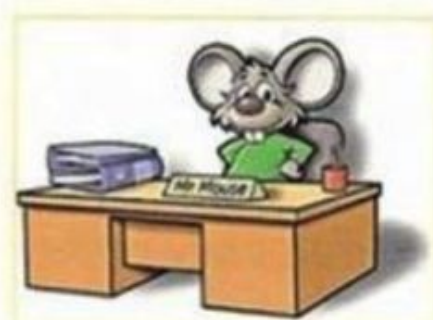
**At home**



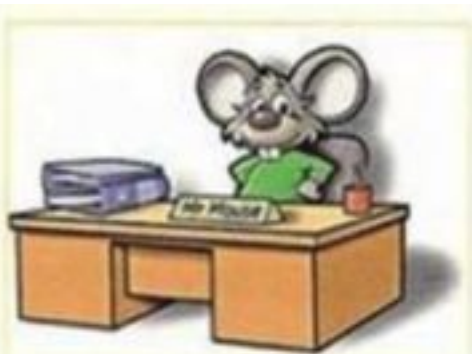
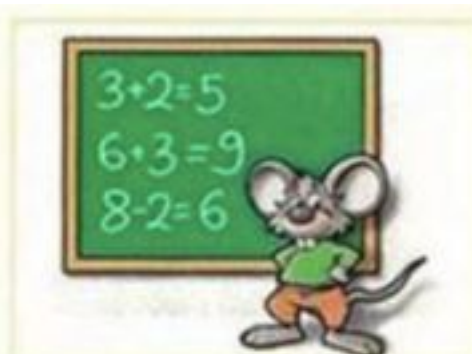
**At school**



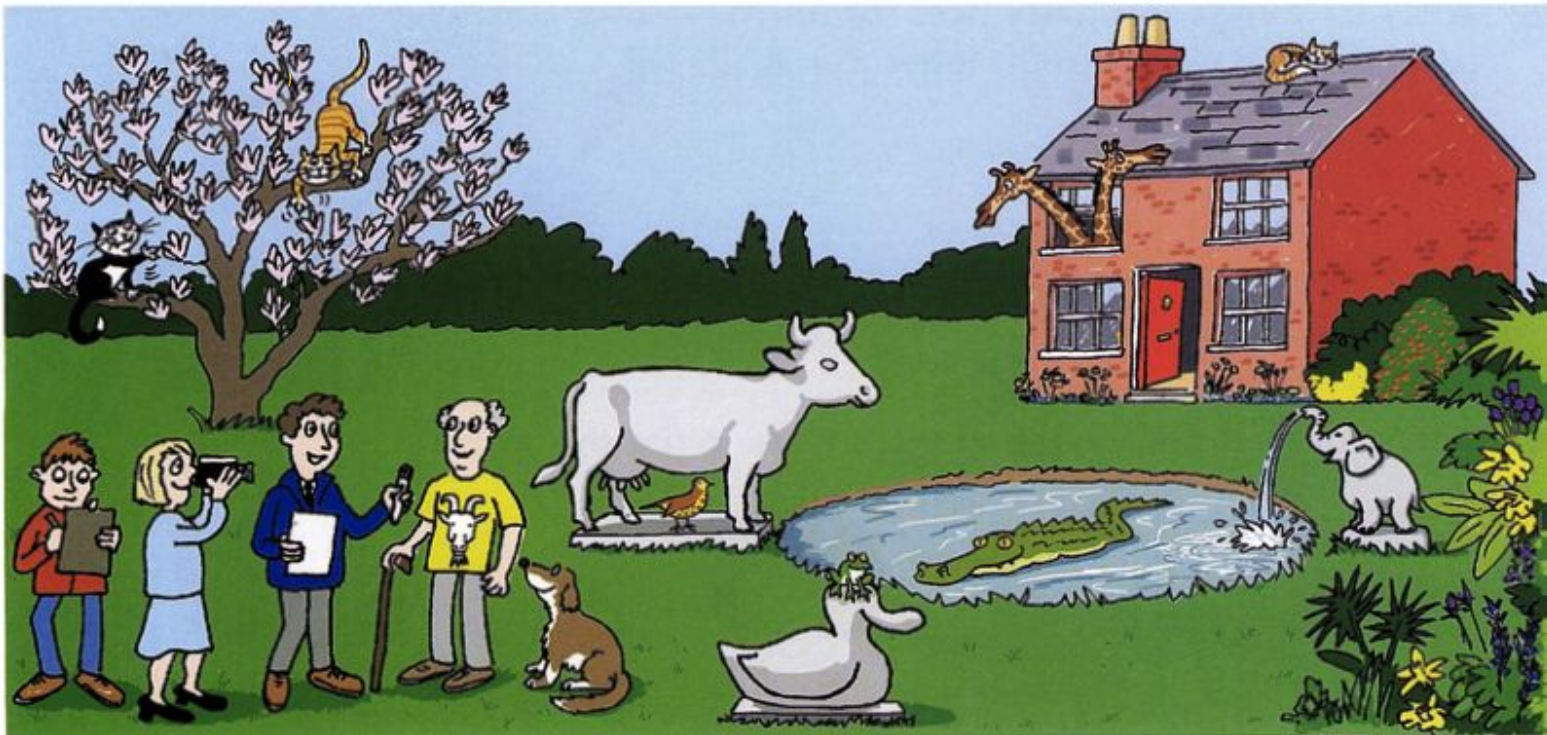
**At work**







**E** Look and read. Write **yes** or **no**.



**Examples**

You can see a goat on the man's T-shirt.

..... **yes** .....

The door of the house is closed.

..... **no** .....

- 1** A frog is sitting on the dog's head.
- 2** There are two giraffes in the window.
- 3** One cat is sleeping in the tree.
- 4** You can see a crocodile in the water.
- 5** A bird is under the cow.

.....  
.....  
.....  
.....  
.....



**D**  Listen and write.

## Tom's pets!

Tom has got three .....

They live in his .....

Tom likes ..... with them.

Their names are Lucy, Ben and .....

They eat Tom's mum's .....!





### Example

I'm green or brown. You can find me in  
and next to water.

a c \_ \_ \_ \_ \_

1 I'm grey and my body is very fat. I can swim  
but I can walk too.

a h \_ \_ \_ \_

2 I live in trees. I eat bananas. I've got a tail.

a m \_ \_ \_ \_ \_

3 I'm long. I eat meat. I haven't got legs.

a s \_ \_ \_ \_

4 I'm small and long. I eat insects. I can run.

a l \_ \_ \_ \_ \_

5 I'm big and white. I can walk on two legs and I  
like eating fish.

a p \_ \_ \_ \_ b \_ \_ \_

6 I'm grey or brown and I've got really long ears.

a d \_ \_ \_ \_ \_

7 I catch insects and eat them. I've got eight legs.

a s \_ \_ \_ \_ \_