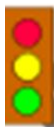
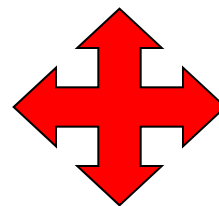
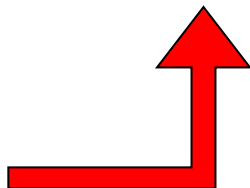
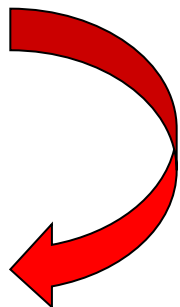


# Asking for and giving directions

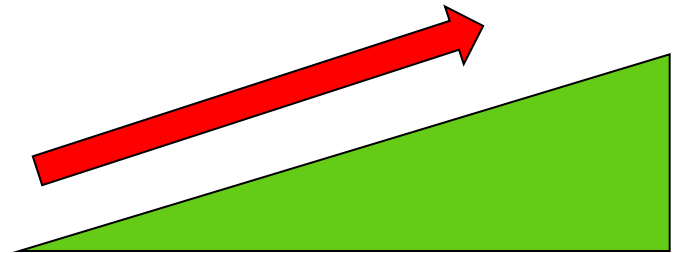
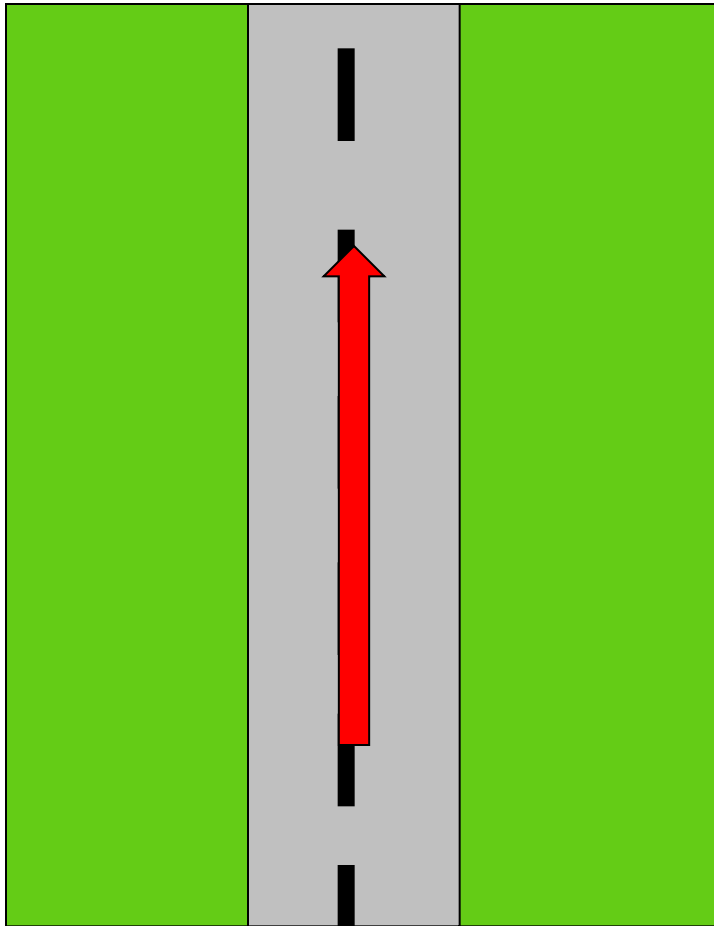


How do I get to....?

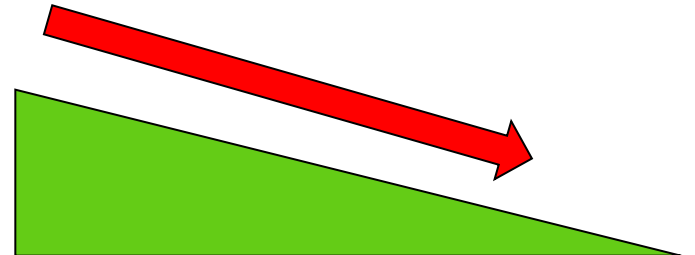
Ho do I go to ...?



**Go along**  
**Go on / ahead**  
**Go straight on** } the street



**Go up** the street

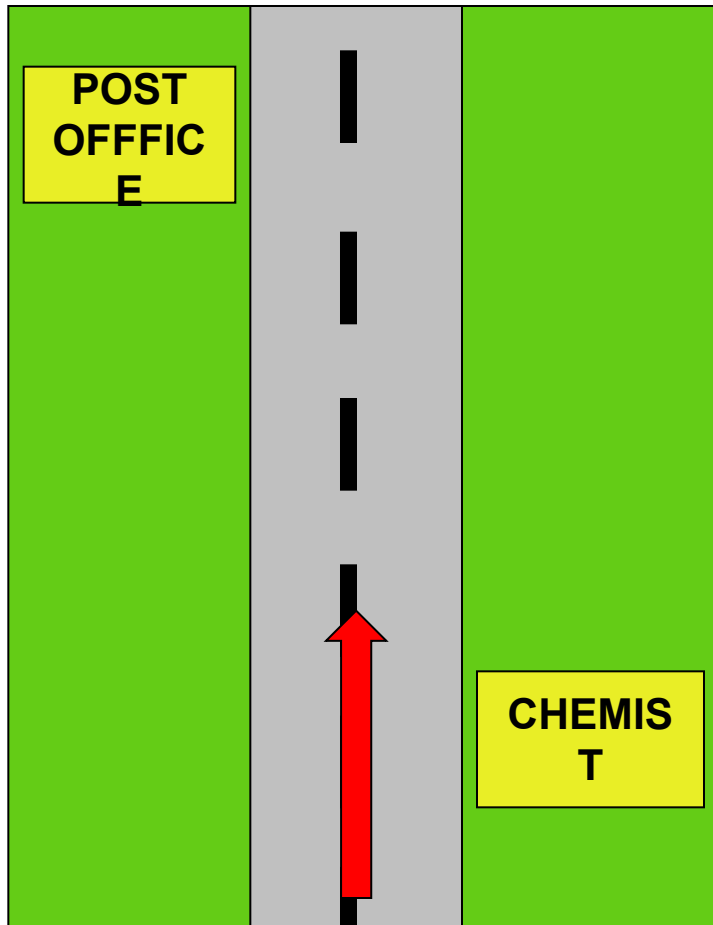


**Go down** the street

**Go past**

**Pass by**

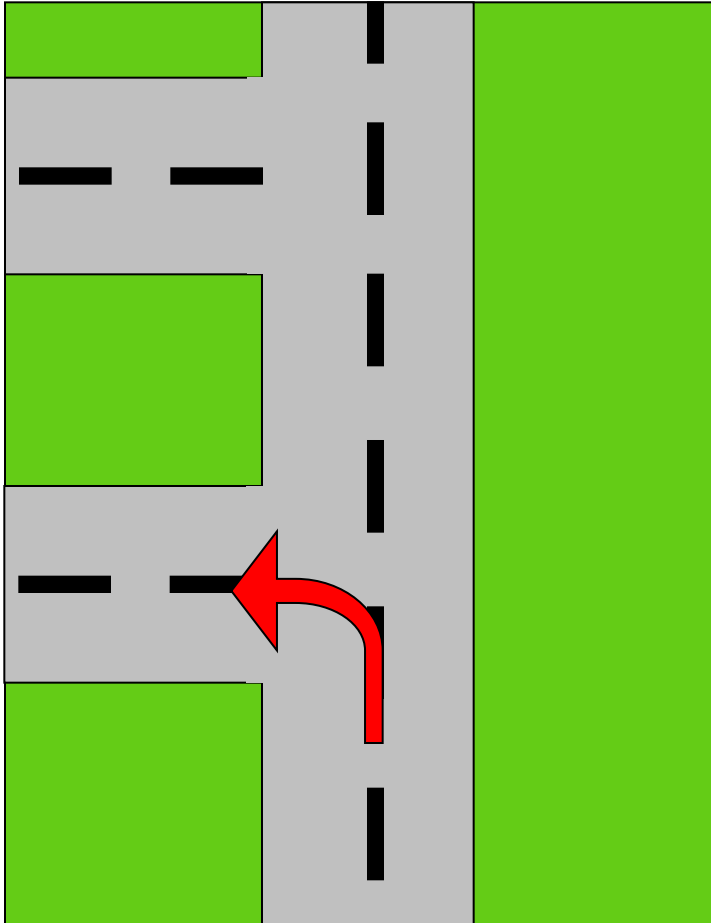
the Chemist



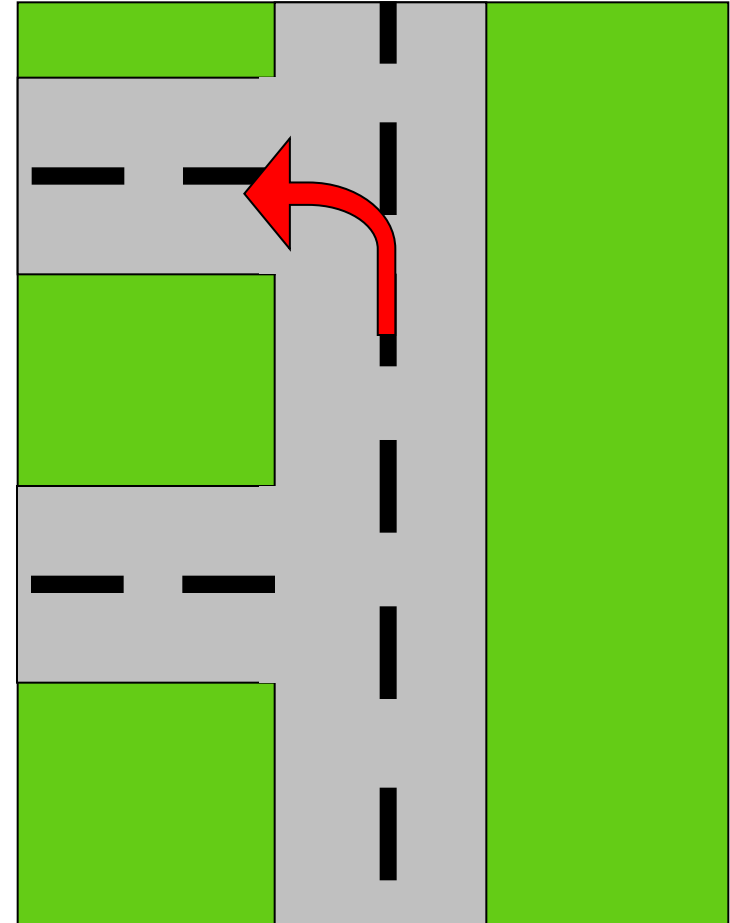
The Chemist is on  
the/your right

The Post Office is on  
the/your left

# Turn Left

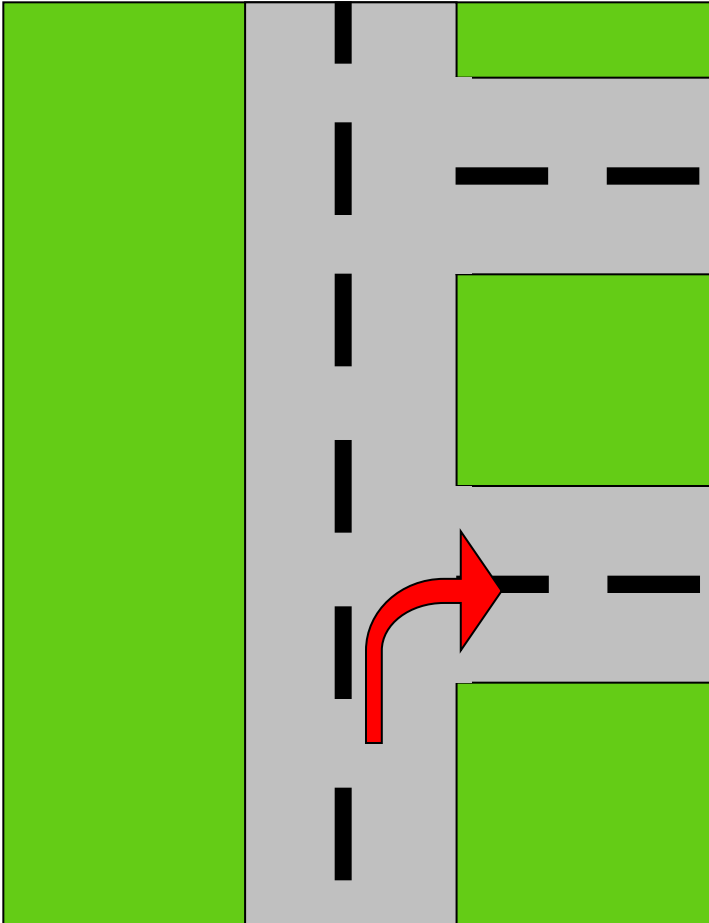


Take the first  
turning on the left

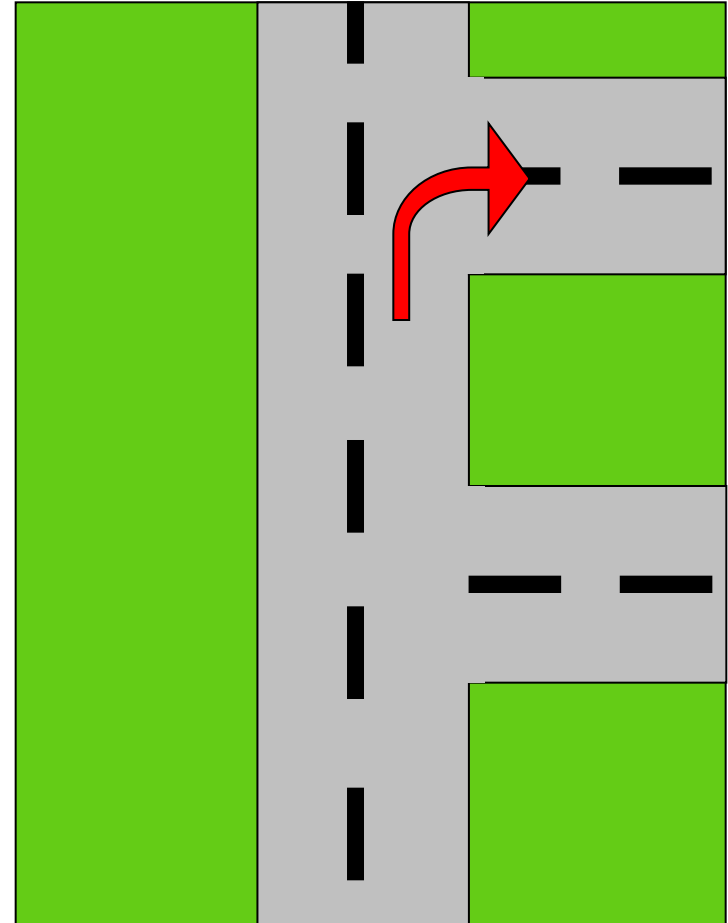


Take the second  
turning on the left

# Turn Right

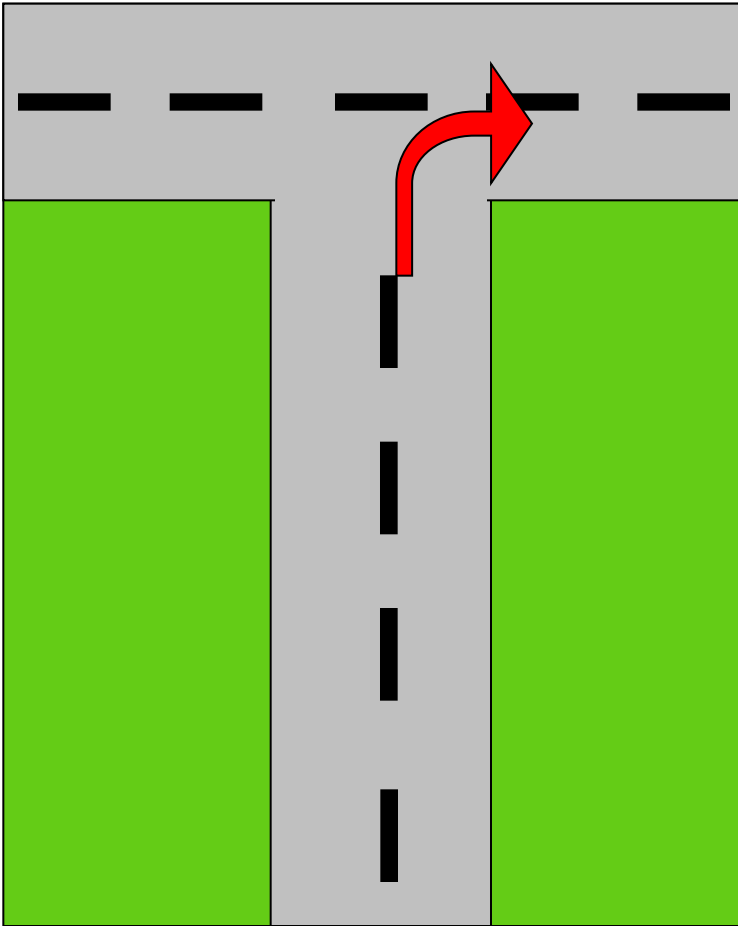


Take the first  
turning on the right

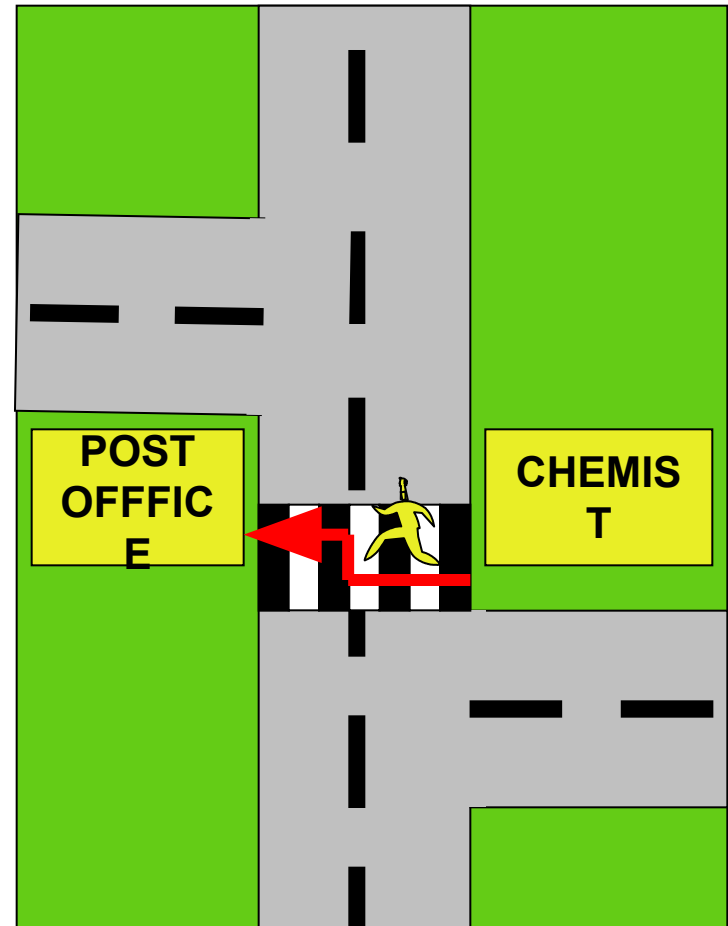


Take the second  
turning on the right

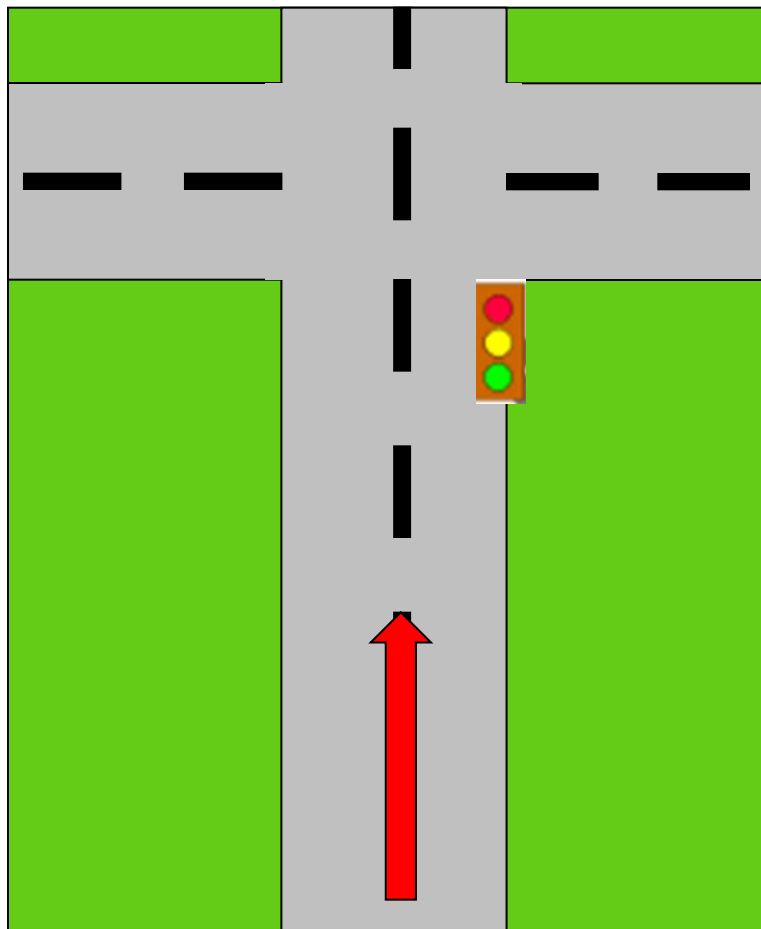
**Turn Right at  
the end** of the street



**Cross** the street

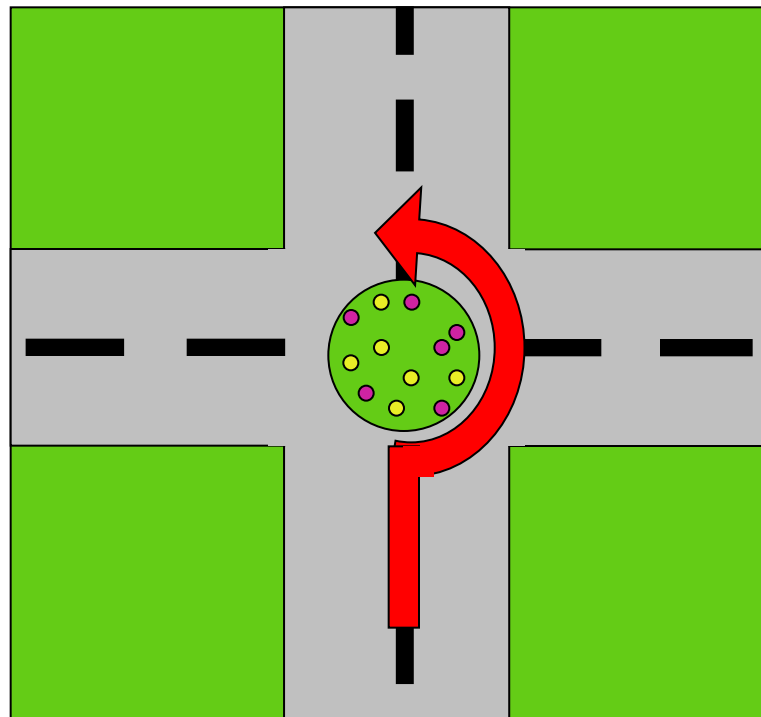


# Go to the Traffic Lights



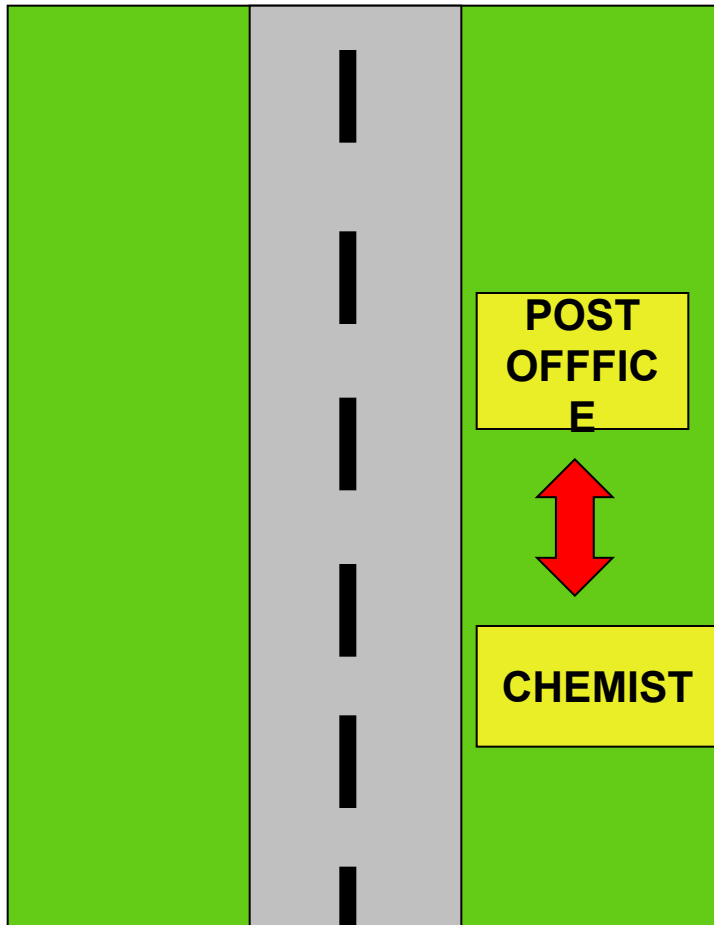
Go straight until you  
come to the *traffic lights*

# Roundabout



Go straight until you  
come to a *roundabout*  
and turn left / take the  
third exit

The Chemist is  
**next to**  
the Post Office



The Post Office is  
**opposite**  
the Chemist

