

Philippines





Total area-300 000 km²

The population- 101 543 800

Religion - Buddhism and Islam

Nationality - *Tagalog*

Currency - pesos, ₱

Climate - tropical





Animals



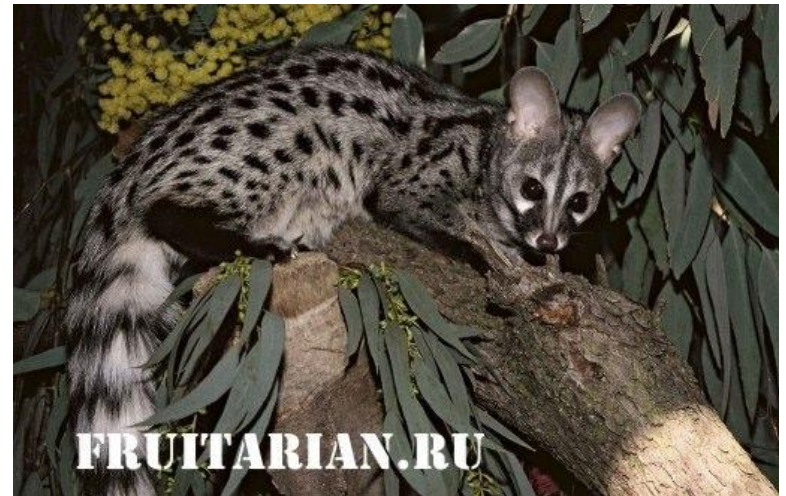
Tarsier



Turtle



The Philippine eagle

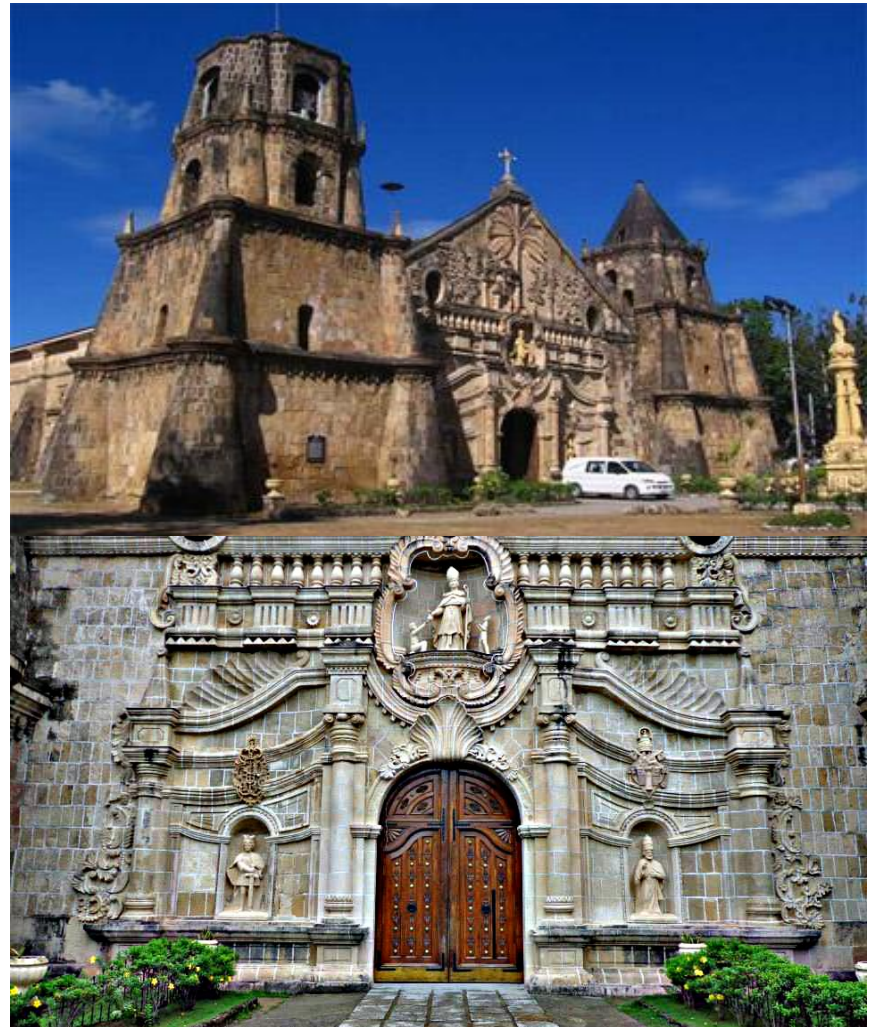


The civet

Attractions



Underground river Puerto Princesa



The Church Of Miagao

National holidays



Day Of The Black
Nazarene. The procession
dedicated to Christ.



ATI-atihan. The three-day festival,
dedicated to the Holy Infant Christ and
the memory of the meeting of the
Malays with the black ATI tribe.

Traditional dishes



Lechón is roast suckling pig



Adobo – pork or chicken braised with lemon or vinegar, soy sauce and spices



Kare-Kare is the pork and vegetable stew with rich and creamy peanut butter