

English-speaking countries

Цели:

образовательные:

- обобщить изученный материал об англоговорящих странах;
- создать условия для развития речевых навыков (монологической и диалогической речи);
- способствовать формированию страноведческих знаний.

развивающие:

- развивать навыки говорения, аудирования;
- развивать способность к сравнению и выделению необходимого материала, к репродуктивным и продуктивным речевым действиям;
- развивать память, внимание, терпение;
- расширять кругозор обучающихся.

воспитательные:

- воспитывать интерес к предмету «Английский язык»;
- воспитывать добрые отношения между обучающимися;
- воспитывать толерантность к странам изучаемого языка.

663310

Красноярский край

г. Норильск

ул. 50 лет Октября, 10

КГБОУ НПО

«Профессиональное училище № 105»

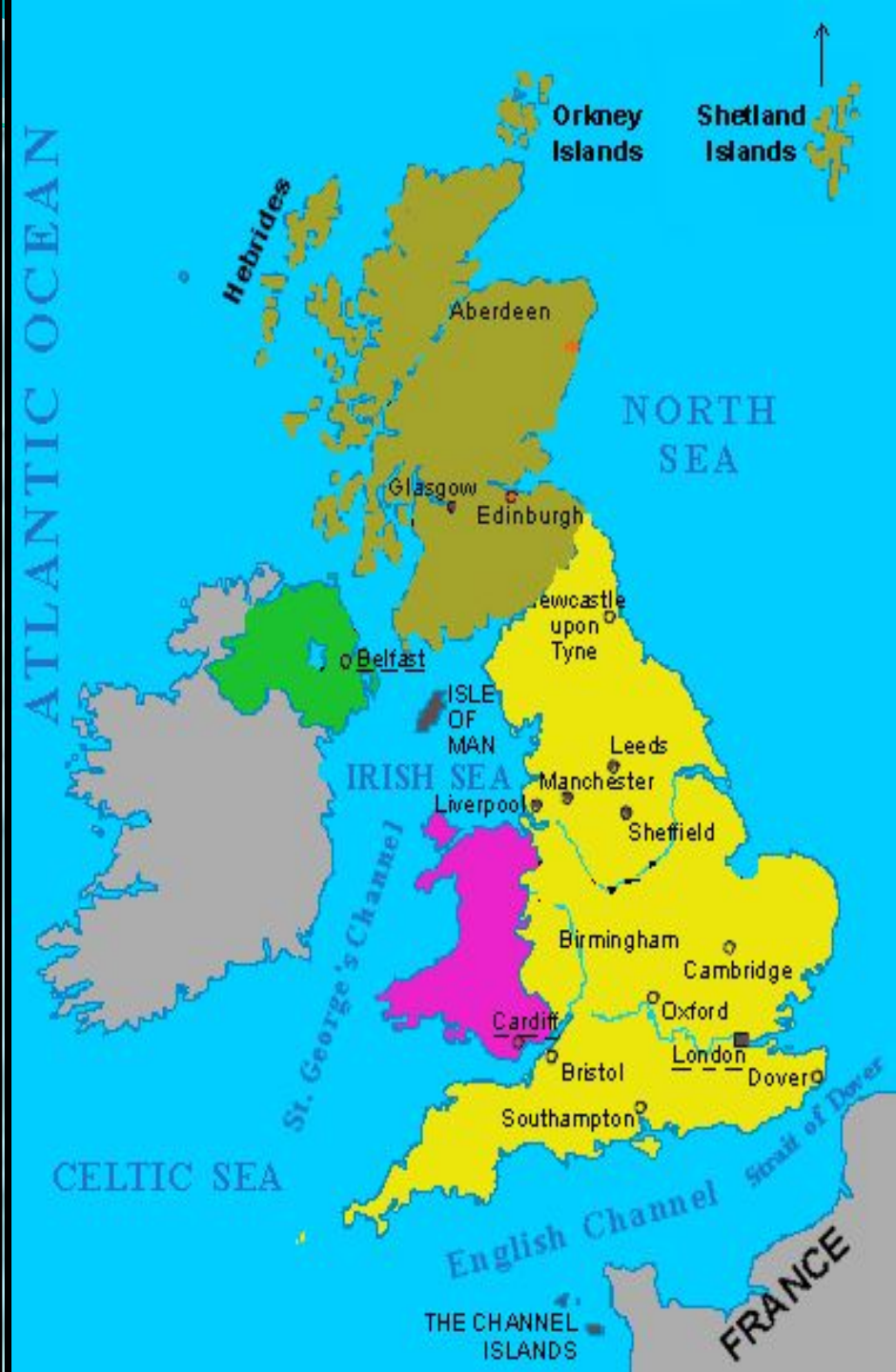
Автор:

Алиева Хадижат

Абдурашитовна

The background of the image is a stylized Union Jack, the national flag of the United Kingdom. It features a red field with a white saltire (St. Andrew's Cross) and blue diagonal stripes. The text "Great Britain" is centered in the white saltire area.

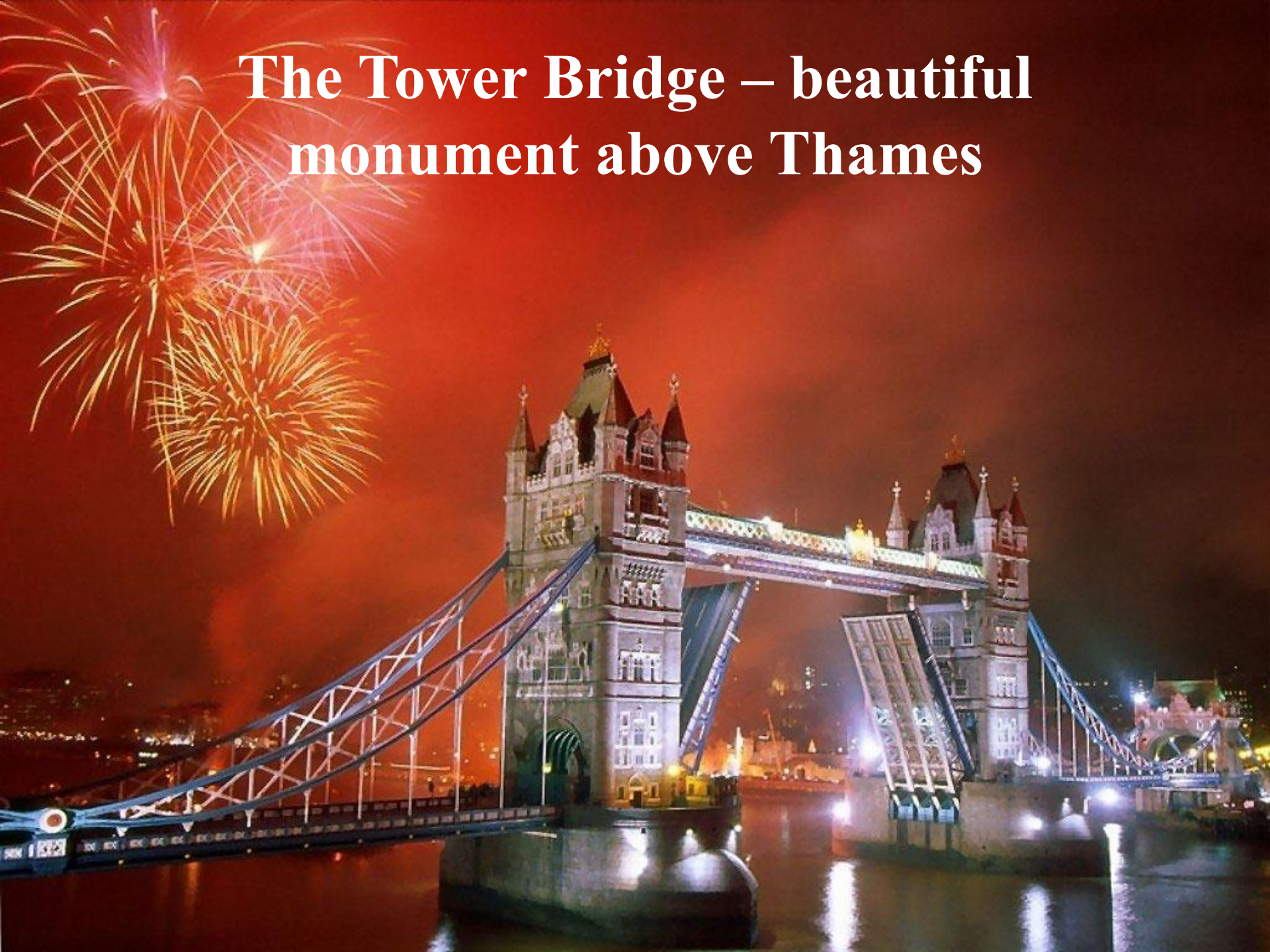
Great Britain



Sights of London



The Tower Bridge – beautiful monument above Thames



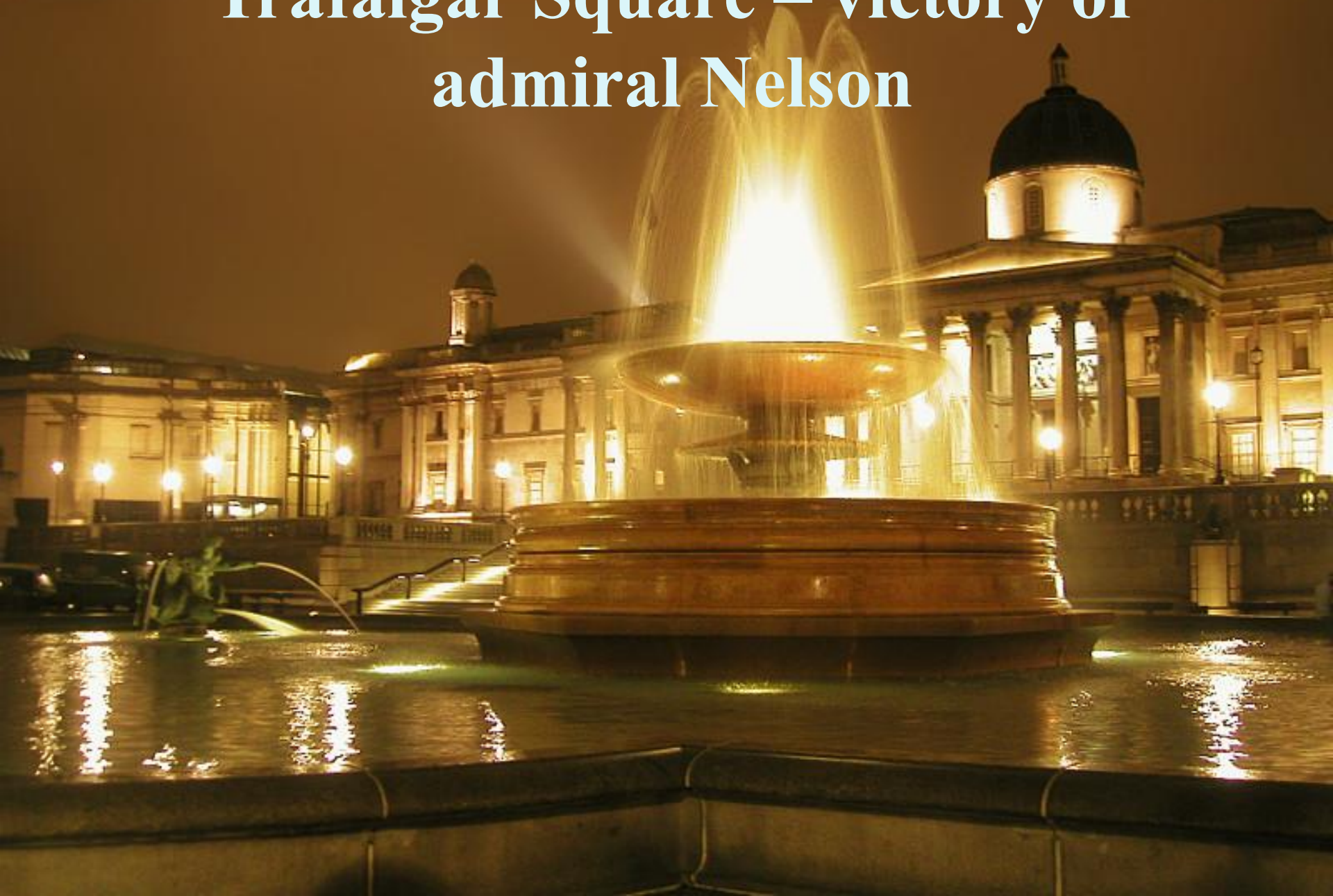
Buckingham Palace – The Queen's residence



Big Ben – Symbol of London



Trafalgar Square – victory of admiral Nelson



Welcome to Australia



What Do You Know about Australia?



- What is the capital of Australia?
a. Sydney b. Melbourne c. Canberra
- Which city is the oldest and largest?
a. Canberra b. Sydney c. Darwin
- Which is a popular Australian animal?
a. bear b. kangaroo c. fox
- Who are the Australian natives
a. Eskimos b. Aborigines c. Indians
- Who discovered Australia?



- a. Columbus b. Captain Cook c. Lewis and Clark

- What is the official Language in Australia?
a. English b. German c. Spain



Australia is situated south of Asia, between the Pacific and the Indian Oceans. Australia is a continent, a country and an island at the same time. Australia is located in the southern hemisphere.



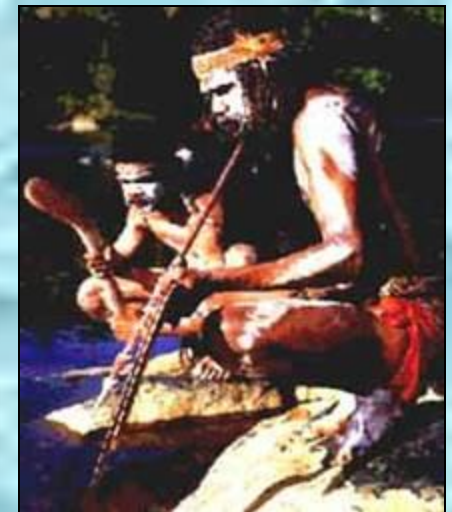
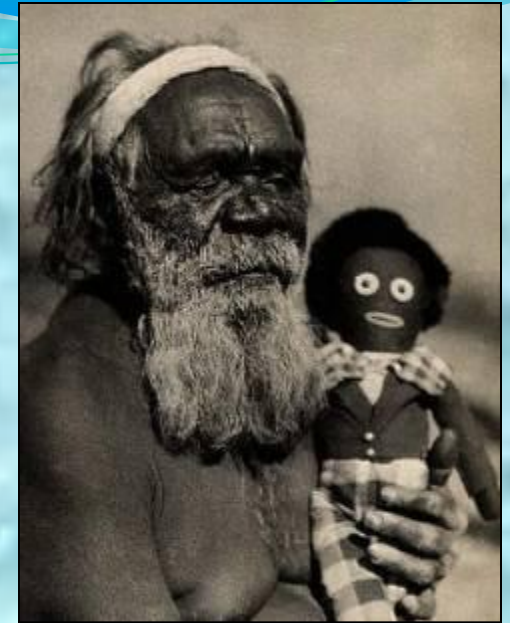


Captain James Cook discovered Australia in 1770. He was sent to discover the huge land that many people believed was south of the equator. He landed south of present day Sydney in New South Wales. He claimed this part of the land for the King of England.

In 1851 gold was discovered about 300 km west of Sydney. People rushed to the gold fields to find their fortunes. This attracted robbers called bushrangers.



Aborigines





The flag of Australia is the only one to fly over a whole continent. The small Union Jack represents the historical link with Britain, the large seven-pointed star represents the six States and Territories, and the small stars from the Southern Cross – a prominent feature of the southern hemisphere night sky.

Australia's coat of arms – the official emblem of the Australian Government – was granted by George V in 1912. The arms consist of a shield containing the badges of the six states. The supporters are native Australian fauna – a kangaroo and an emu. A yellow-flowered native plant, wattle, also appears in the design.



Canberra

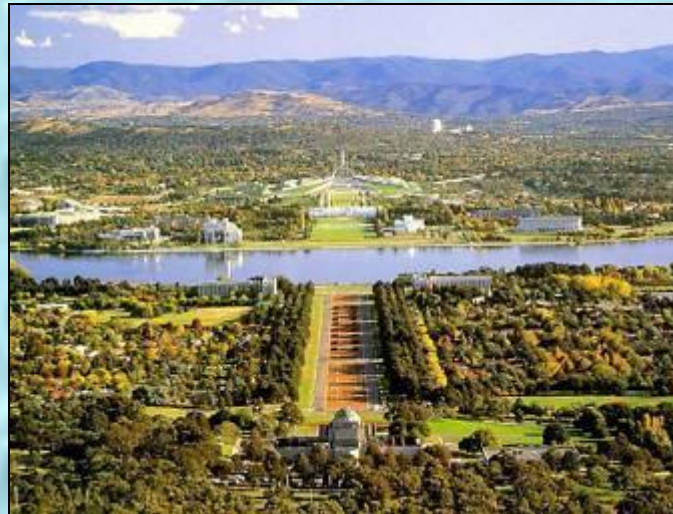
Canberra is the capital of **Australia**. It is very young city.
Population is about **310,000** people.



Capitol Hill

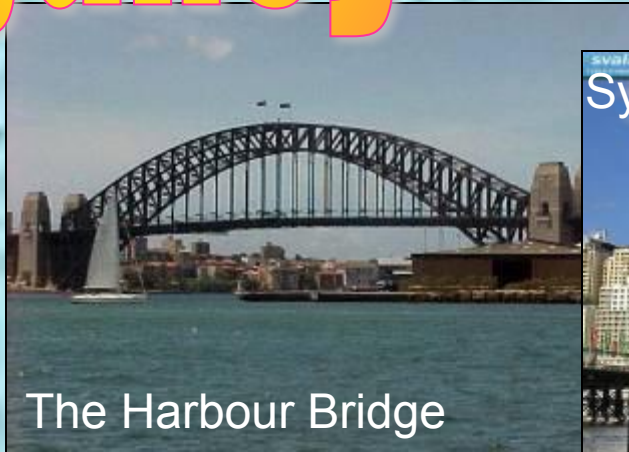


Canberra Fountain



Sydney

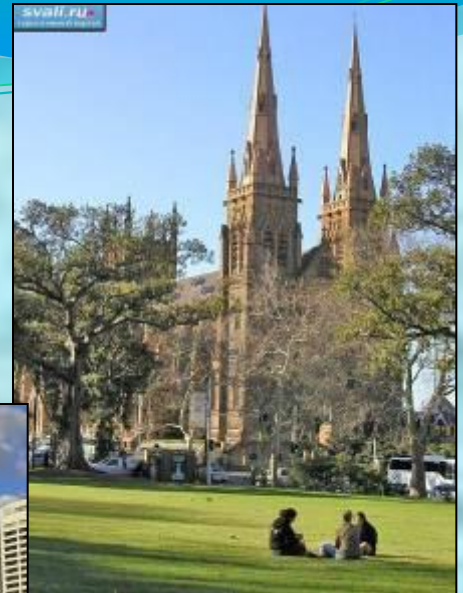
Capital of New South Wales.
Leading industrial city.
Population: 3,200,000
people.



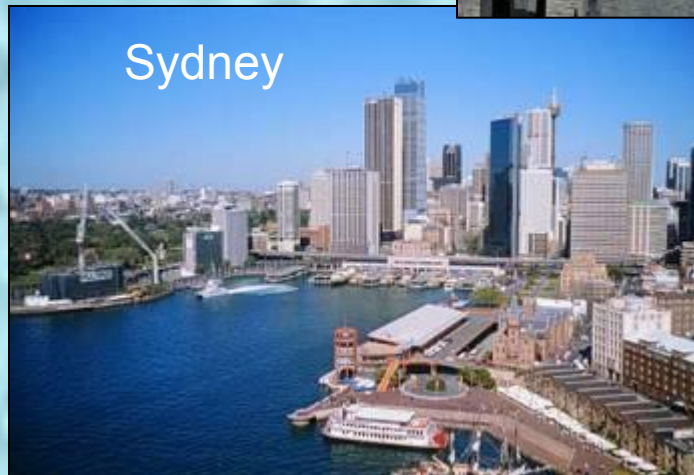
The Harbour Bridge



Sydney AMP Tower



St. Maria Cathedral



Sydney



Opera House

Capital of **Victoria**. The
world's most livable city.
Population: **3.200.000**

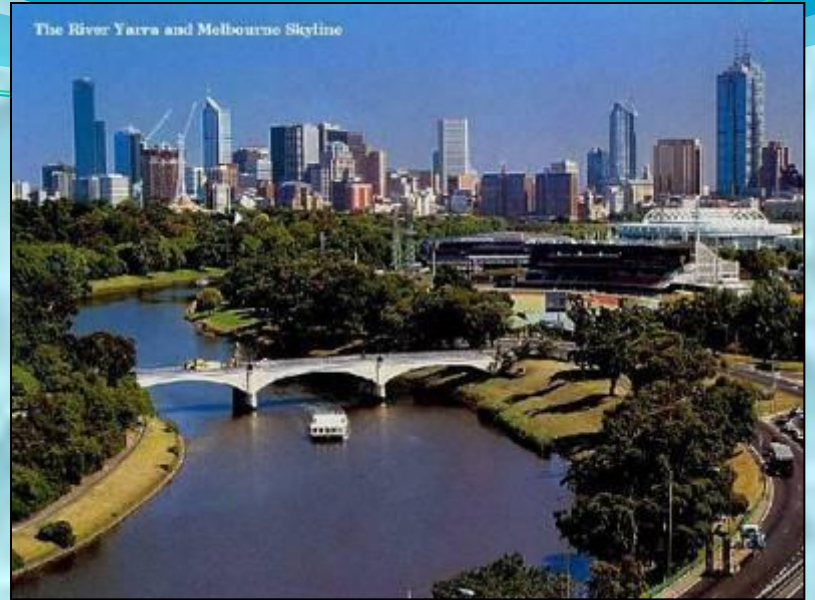
Old House



Melbourne Bridge



The River Yarra and Melbourne Skyline



Train Station



Capital of **Queensland**. It is a year-round vacation place. Population is about **1,400,000** people.



Brisbane Skyscrapers



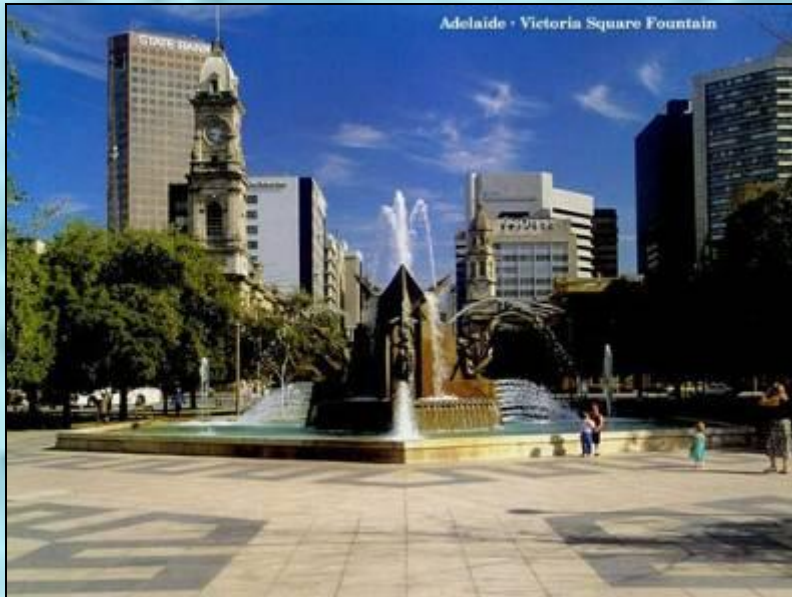
Brisbane Bridge



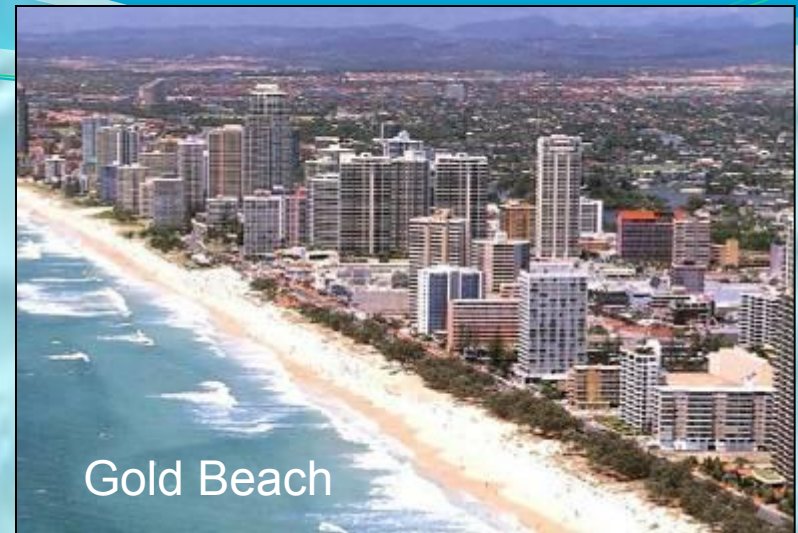
Brisbane

Brisbane

Capital of **South Australia**. A pretty and industrial city. Population: **1,100,000** people.



Victoria Square Fountain



Adelaide



Capital of **Western Australia**.
One of the best climates in
Australia. Population:
1.200.000 people.

Perth Skyscrapers

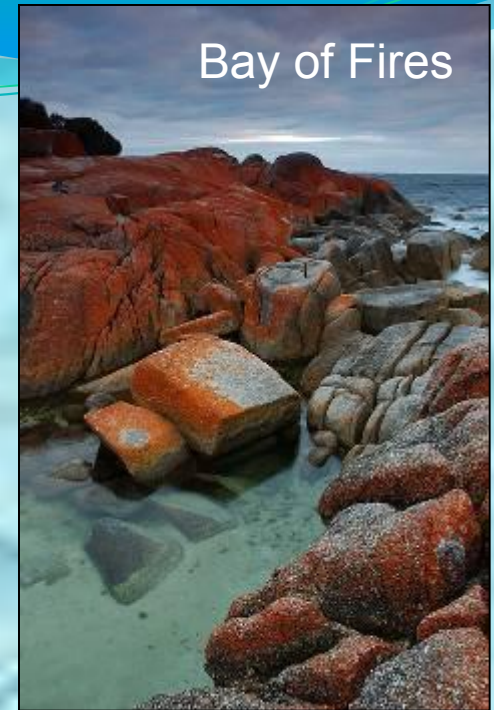


King's Park

Perth

Hobart

Capital of island-state
Tasmania. Winters are
very cold. Population of
about **200,000**.

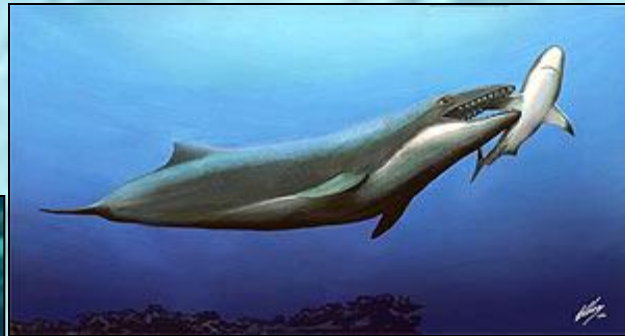


Natinal Parks



Great Barrier Reef

It's the world's largest coral reef (over 2000 km). It stretches along the east coast of **Queensland**. It's made up of over 2900 individual reefs very close to each other.

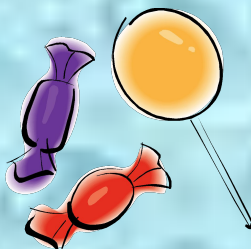
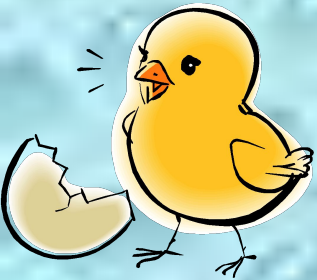




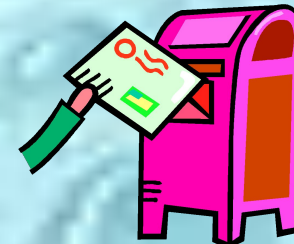
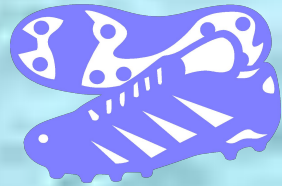
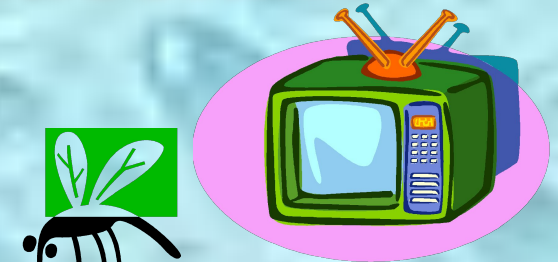
Australians really love nature. They try to protect their nature and their animals.



How do you say it in Russian?

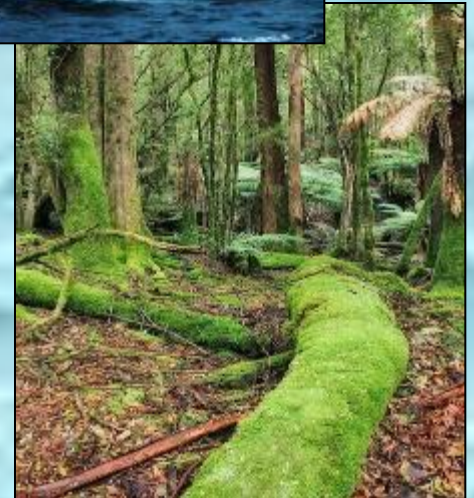


British	Australian
barbecue	barbie
kangaroo	roo
mosquito	mozzie
chicken	chook
candy	lollie
slippers	thongs
TV	tellie
girl	sheila
form	year
sheep	jumbuck
cinema	pictures
postbox	letterbox
trainers	runners
freeway	main road



Try again

- What is the capital of Australia?
a. Sydney b. Melbourne c. Canberra
- Which city is the oldest and largest?
a. Canberra b. Sydney c. Darwin
- Which is a popular Australian animal?
a. bear b. kangaroo c. fox
- Who are the Australian natives?
a. Eskimos b. Aborigines c. Indians
- Who discovered Australia?
a. Columbus b. Captain Cook c. Lewis and Clark
- What is the official Language in Australia?
a. English b. German c. Spain



Match the name of provinces with the names of it's capitals

Match the name of provinces with the names of it's capitals

Hobart

Queensland

Melbourne

Western Australia

Sydney

Tasmania

Victoria

Perth

Brisbane

South Australia

Adelaide

New South Wales



Adelaide

South Australia

Melbourne

Victoria

Sydney

New South Wales

Brisbane

Queensland

Perth

Western Australia

Hobart

Tasmania

Canada



National symbols of Canada

The red and white Canadian flag shows a leaf of the maple tree, which grows in North America.



**The Royal Coat of
Arms of Canada**

MAP OF CANADA



Base: BC1528 (RQ1530) 4-97

Canada is situated on the North American continent.



The Niagara Falls

Niagara Falls forms the international border between Canada and the USA



The Capital of Canada



The capital of Canada is **Ottawa**, which is situated on the bank of the Ottawa River.

The population

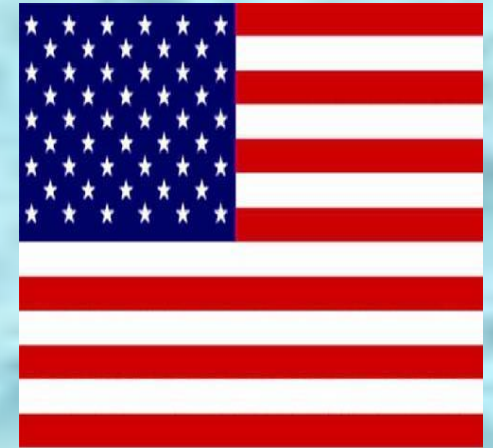


Languages of Canada

**Official languages of Canada
are English and French.**



The United States of America



**The Stars
and Stripes**

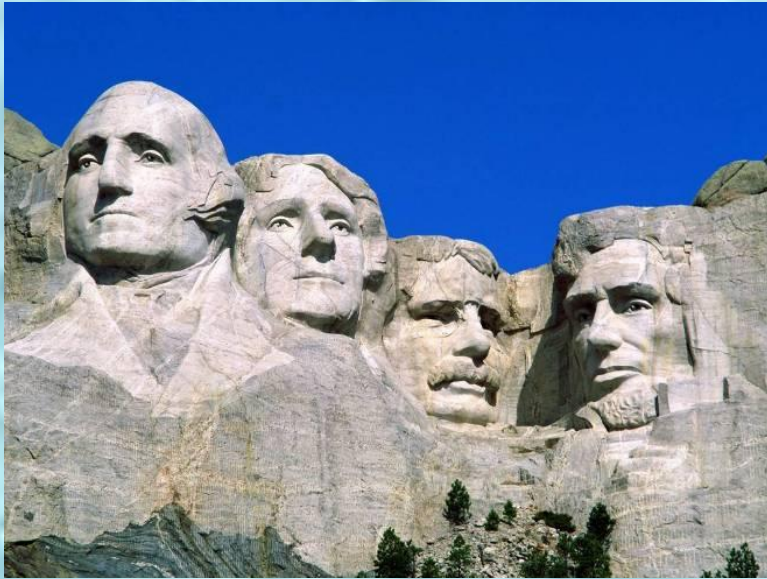
Washington D.C.



**The Statue of Liberty,
the Empire State and
Chrysler Buildings**



Mount Rushmore



Hollywood



Yellowstone National Park



The map of New Zealand



New Zealand lies between the Equator and the South Pole in the southern Pacific Ocean, near the eastern coast of Australia.

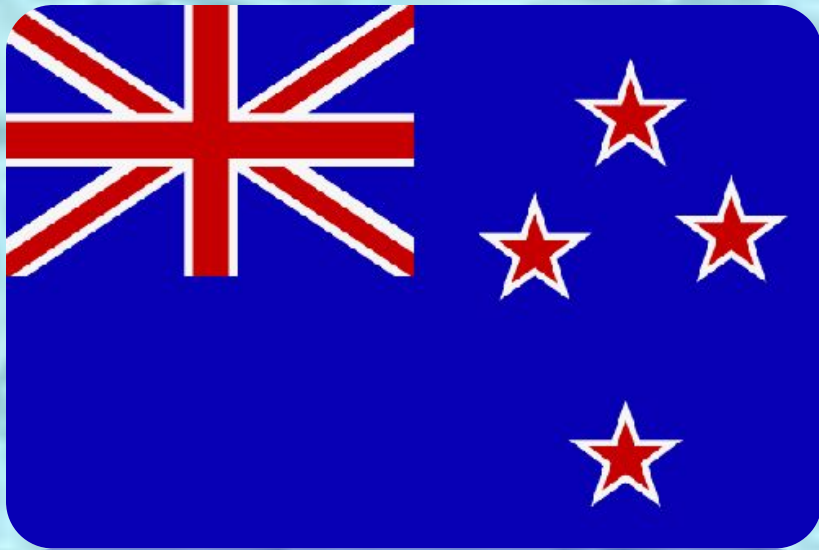
New Zealand is an island country with a total area of 268,680 sq km.

It has no land boundaries. Australia is New Zealander's nearest western neighbour. These two countries are separated from each other by the Tasman sea.



The symbols of New Zealand

As for the New Zealand Flag, the stars of the Southern Cross show country's location in the South Pacific Ocean. The Union Flag shows that New Zealand was once a British colony.



There are two national anthems of New Zealand and both have equal status. These are *“God defend New Zealand”* and *“God Save the Queen”*. The first one is always used on sports occasions.

The symbol of New Zealand is the kiwi – a flightless bird, native to this country. Kiwi has no tail, almost no wings and is about the size of a large hen. No other bird lays eggs so large in proportion to its size: the egg is about one fifth of its own weigh. It means that in many ways the kiwi does not look like an ordinary bird. It is rare and very much protected.



**It's
interesting to
know:**

The Kiwi as an emblem first appeared in the late 19th century. During World War I the name “kiwi” was used for New Zealand soldiers.

The population of the country

An interesting historical fact...

Before Europeans came to the island, the tribes of Maori did not have the name for themselves. They adopted the name “Maori” meaning “normal” to distinguish themselves from Europeans.

The tribes of Maori are well-known all over the world. The Maori are famous for their folk-songs and wood-work. They are often called “Vikings of Sunrise”.



Wellington



Dunedin



Christchurch



Auckland



The Tasman Sea

Bungee jumping in New Zealand

