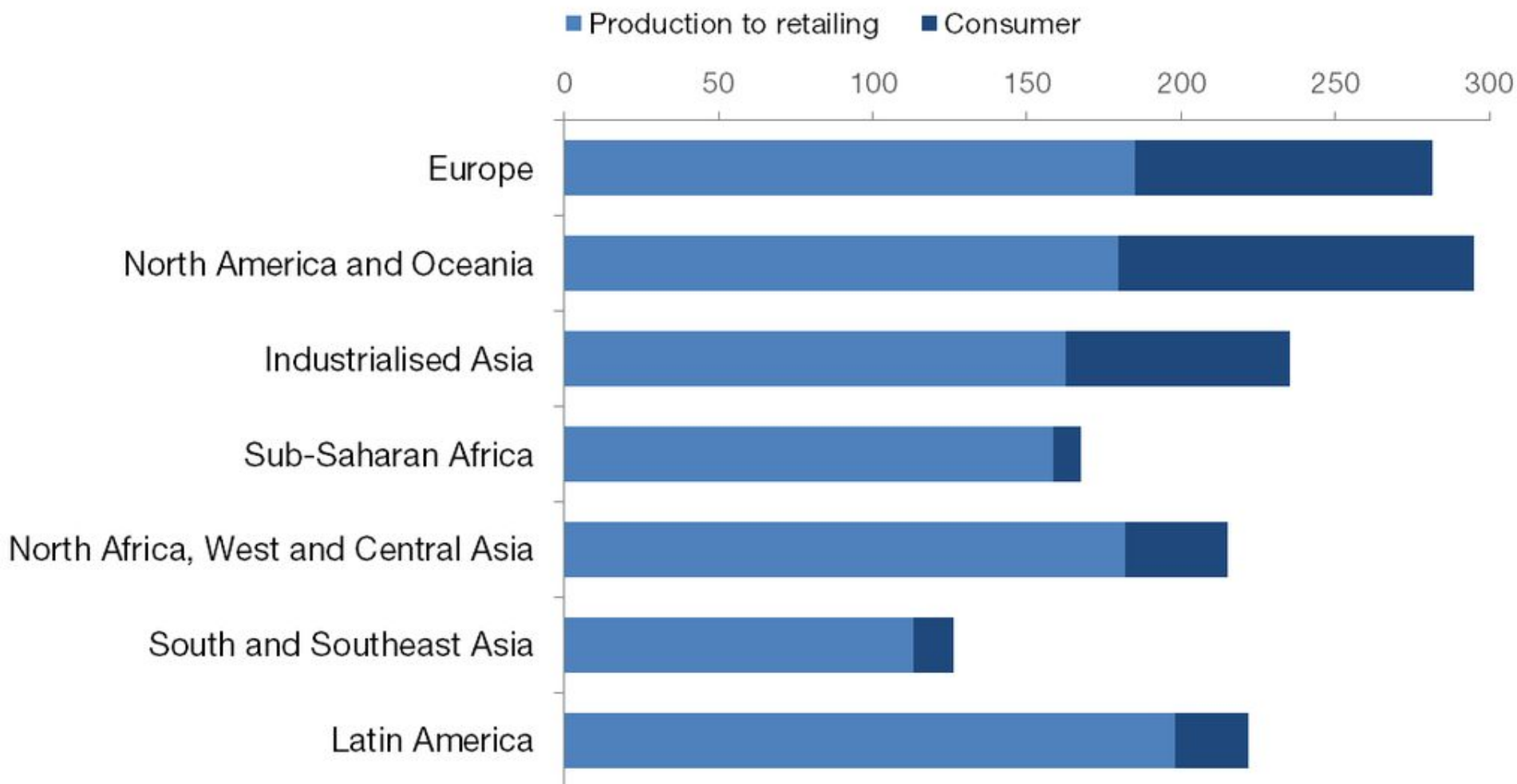


# Global problems

The image is a conceptual graphic. It features a large, vibrant green tree with a thick trunk and a full, rounded canopy. This tree is contained within a perfectly spherical, transparent glass-like globe. The globe is held gently in the palms of two large, black, stylized hands that emerge from the bottom of the frame. The background is a clear, bright blue sky with a few wispy white clouds. A bright sun is visible in the upper right, creating a lens flare effect that shines through the tree's leaves. The text 'Global problems' is written in a clean, white, sans-serif font, centered horizontally and partially overlaid by the tree's foliage.

# Which regions waste the most food?

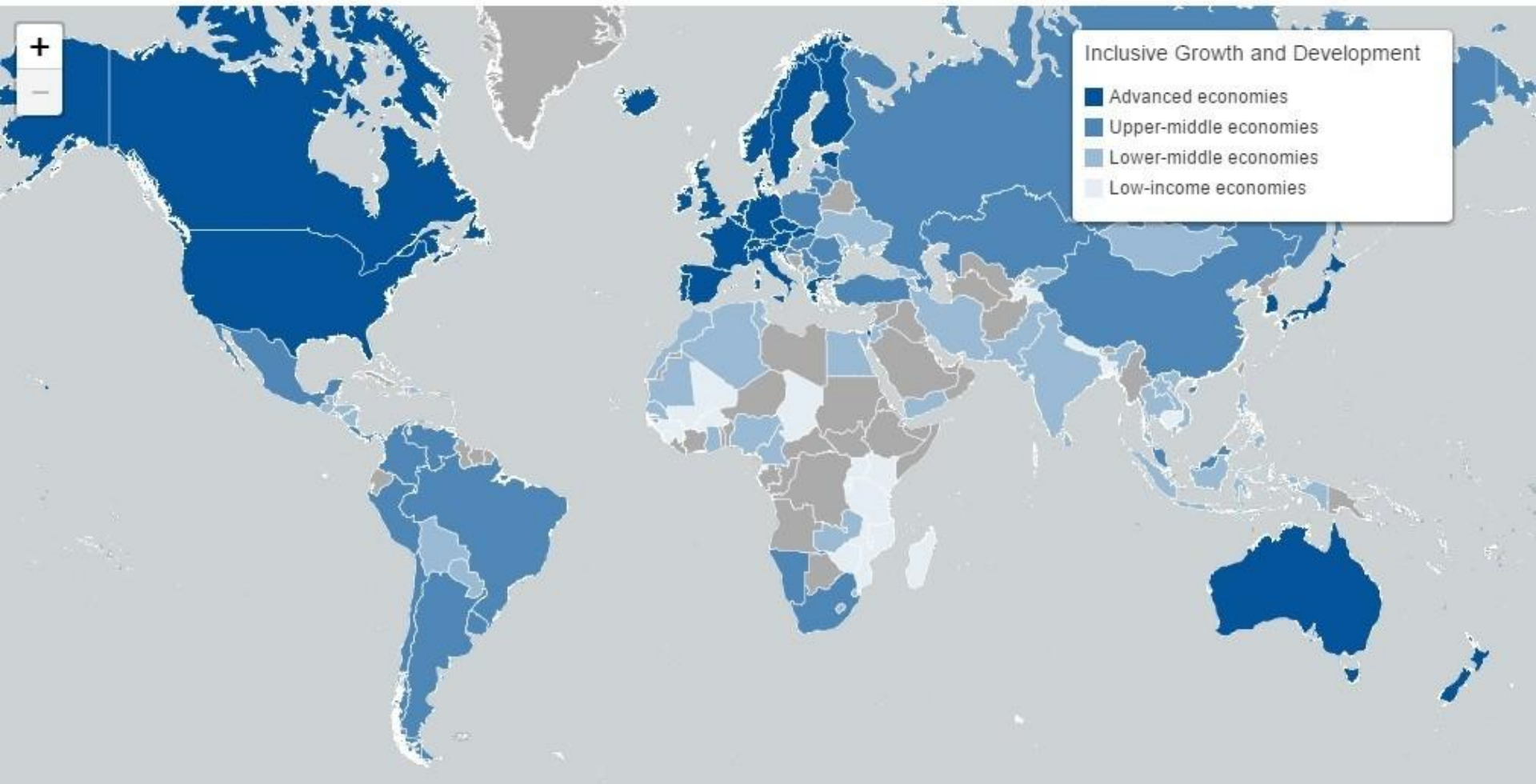
Per capita food losses and waste, kg/year



Source: The Food and Agriculture Organization of the United Nations (FAO)

## The Inclusive Growth and Development Report 2015

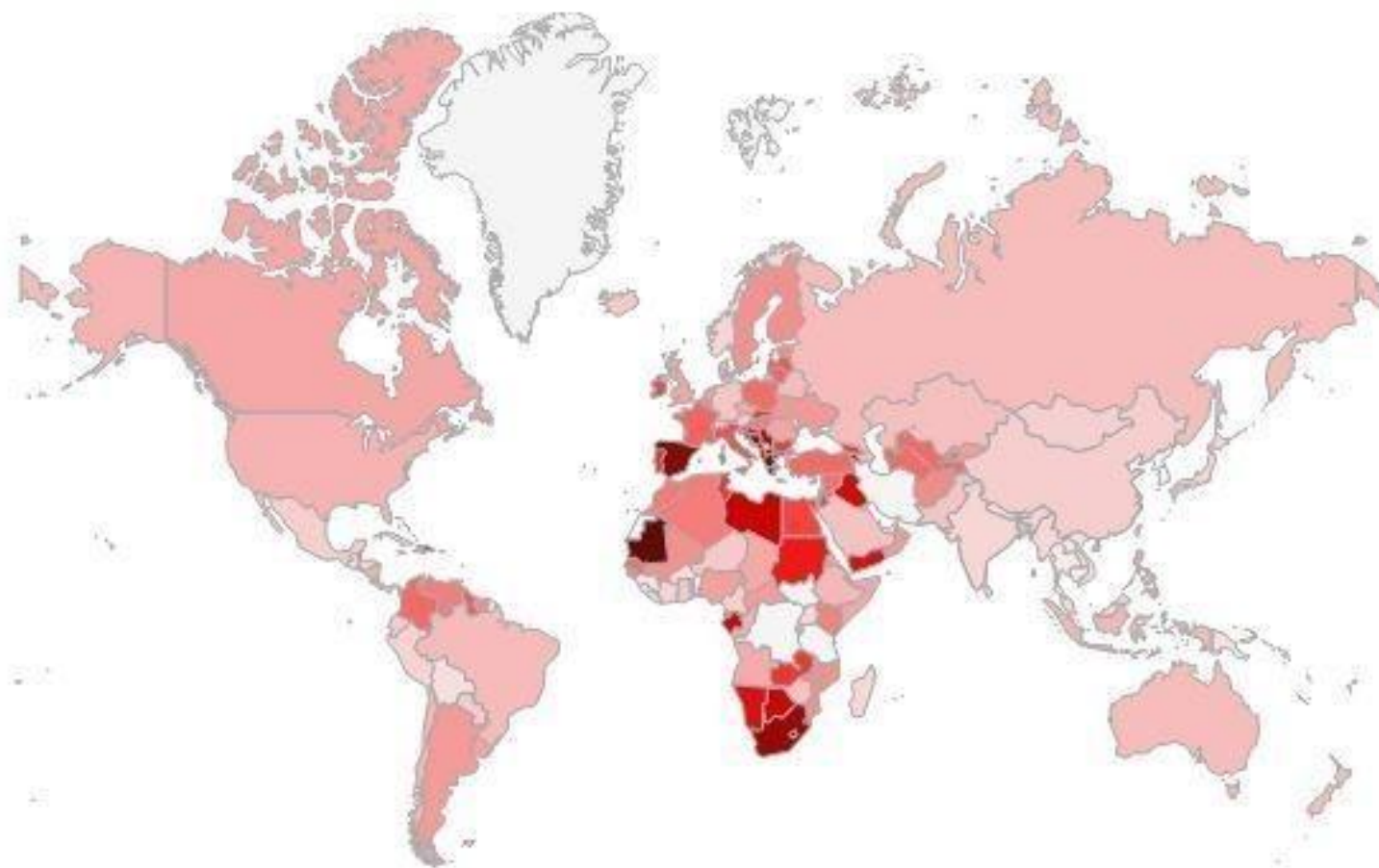
The Inclusive Growth and Development Report 2015 presents a framework and a corresponding set of indicators in seven principal policy domains (pillars) and fifteen sub-domains (sub-pillars) for 112 countries.





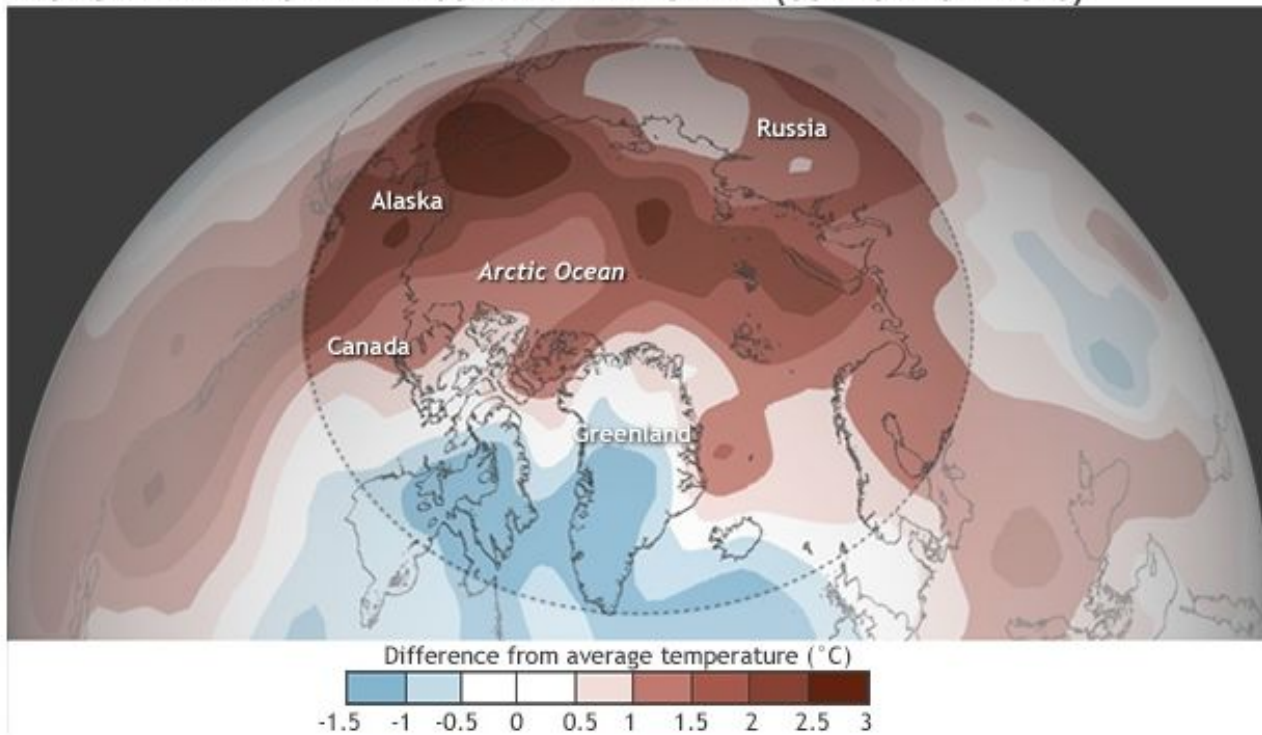
# Unemployment rate per country (%) \*

Year  ▼

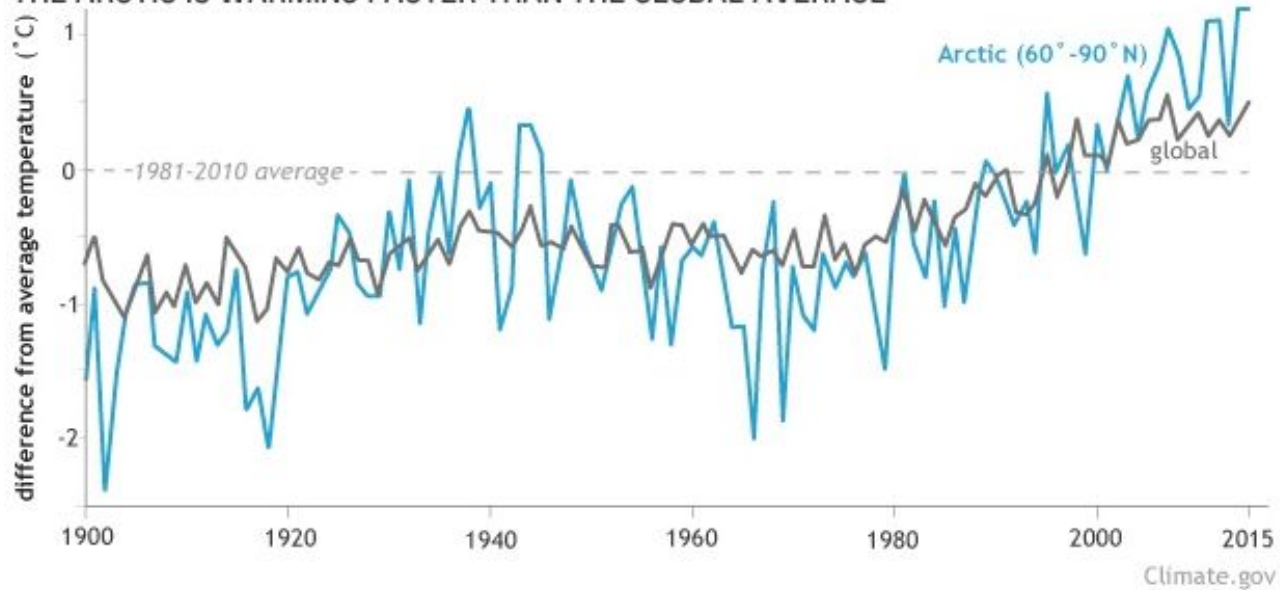


0.46  30.82

## ARCTIC LAND AREAS WERE RECORD WARM THIS YEAR (OCT 2014-SEP 2015)

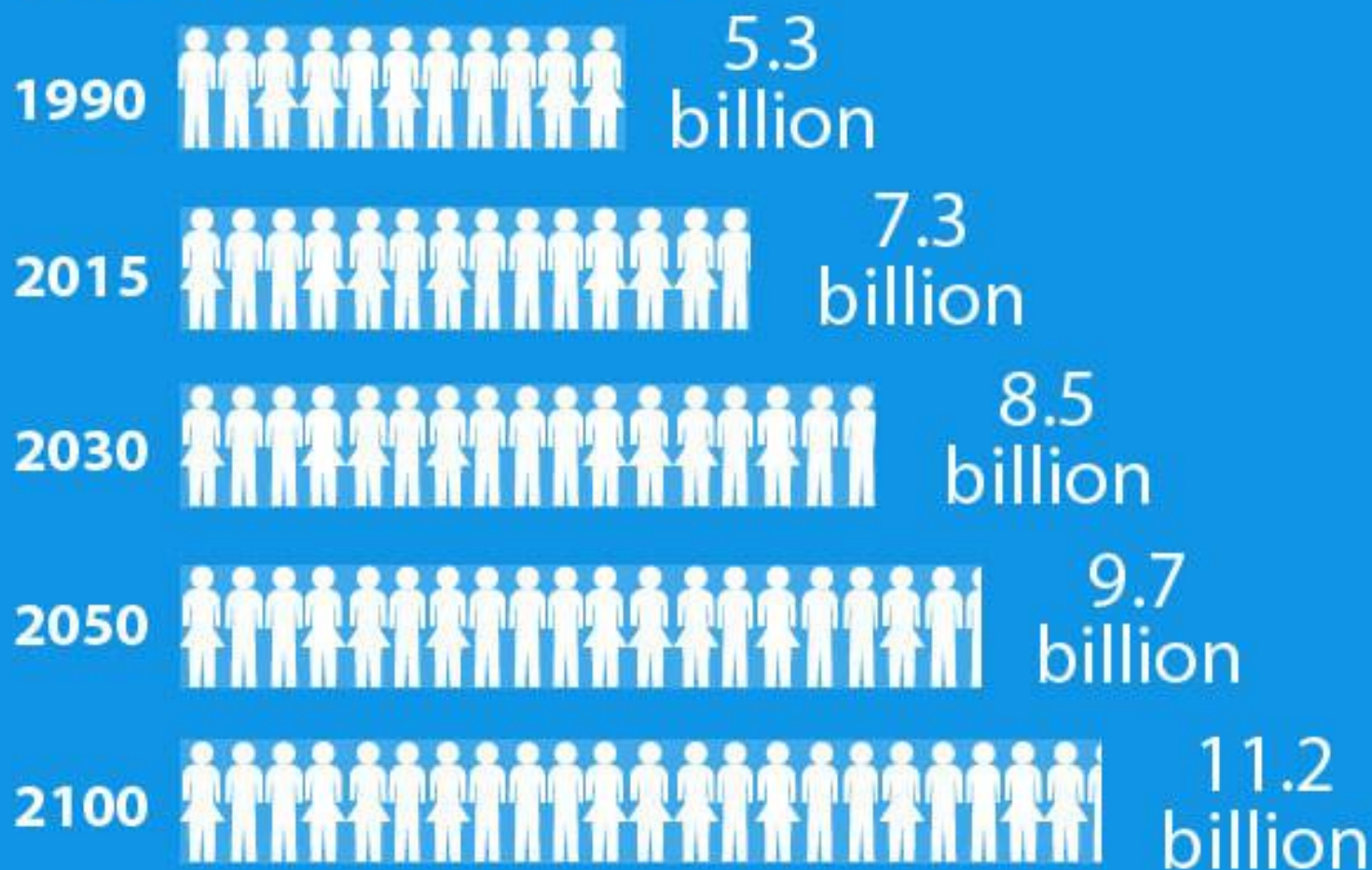


## THE ARCTIC IS WARMING FASTER THAN THE GLOBAL AVERAGE



# World Population

*Projected world population until 2100*



Source: United Nations Department of Economic and Social Affairs,  
Population Division, *World Population Prospects: The 2015 Revision*  
Produced by: United Nations Department of Public Information



**2015**  
TIME FOR  
GLOBAL ACTION  
17 GOALS TO TRANSFORM OUR WORLD