

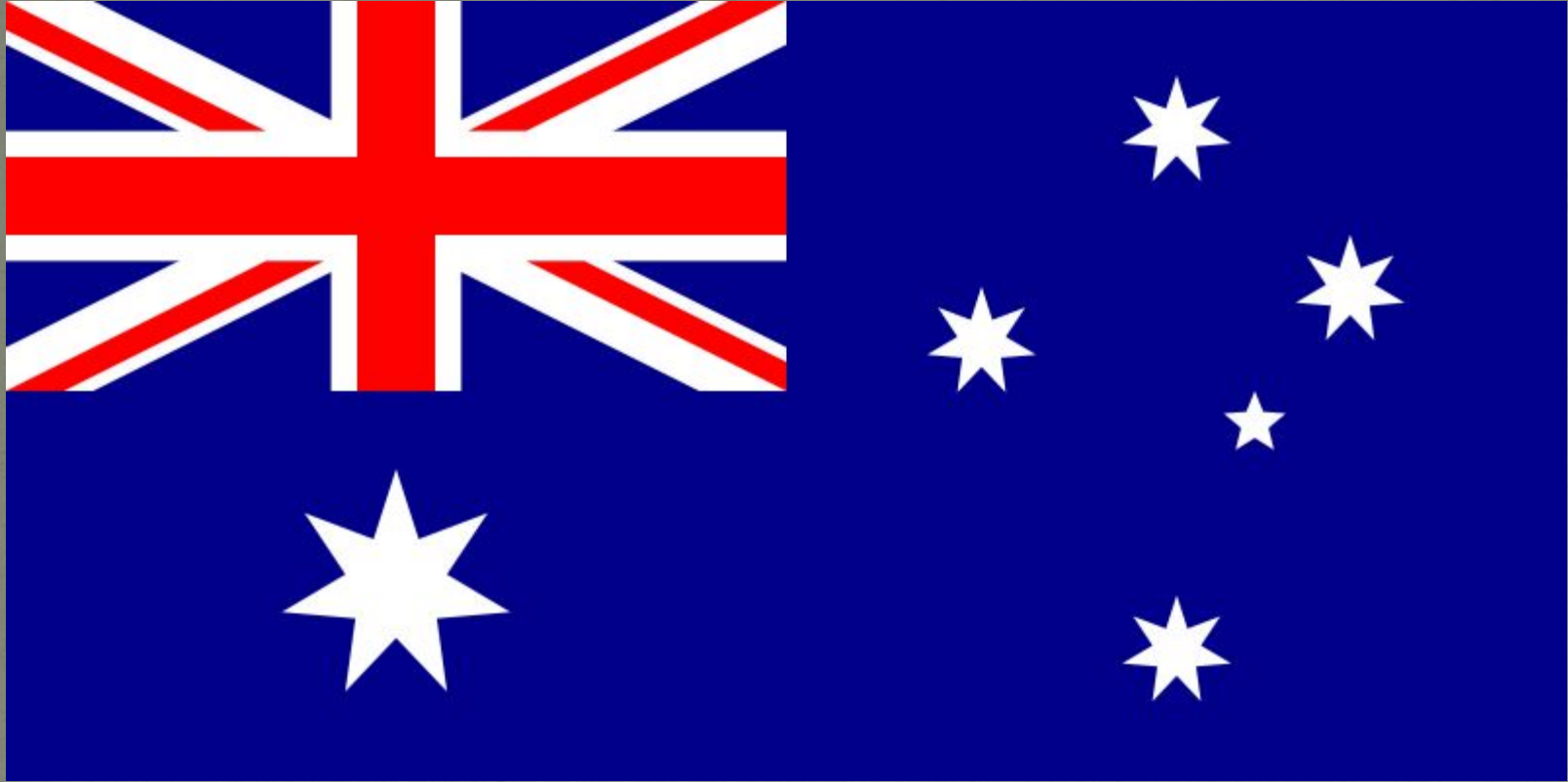
Australia



Australia is a country in the southern hemisphere



Flag of Australia



The small Union Jack represents the historical link with Britain. The large seven – pointed star represents the six States. The small stars form the Southern Cross – a prominent feature of the southern hemisphere night sky.

Coat of arms



consist of a shield containing the badges of the six states. The supporters are a kangaroo and an emu.

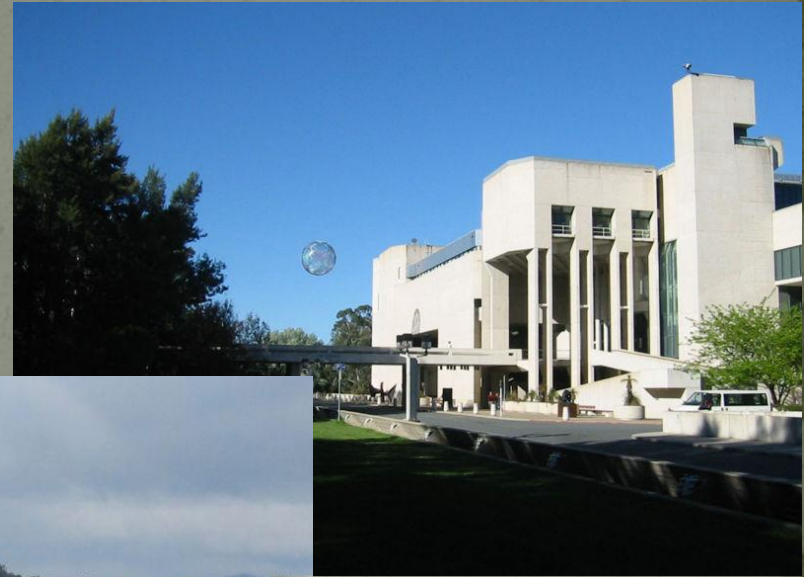
Human habitation of Australia began 48,000 years ago. The Australian natives are the Aborigines.



The first navigator who sailed along coasts of Australia and mapped them was James Cook. He named a new land New South Wales. It was in 1770.

Canberra – the Capital of Australia

- Canberra is the home of Australia's government.
- Australia's national landmarks are located in Canberra. The National Science and Technology Centre, the High Court, the National Gallery are all here.



The centrepiece of the city is the new Parliament House

Australia



The centrepieces of the city are Sydney Opera House and



Sydney Harbour.

● Sydney is the largest and oldest city in Australia. It's surrounded by ocean and national parks. Sydney was chosen to host the 2000 Olympic Games.



- Melbourne is the Culture Capital of Australia, with world – class music, dance opera, comedy and theatre. The most popular sights of the city are Performing Arts Museum



the Royal Exhibition Building



National Library of Australia

nla.pic-vn3313722-v



the Victorian Arts Centre

the Melbourne Concert Hall

Among well-known Australian fauna are:



koala



possum



tasmanian devil



kangaroo



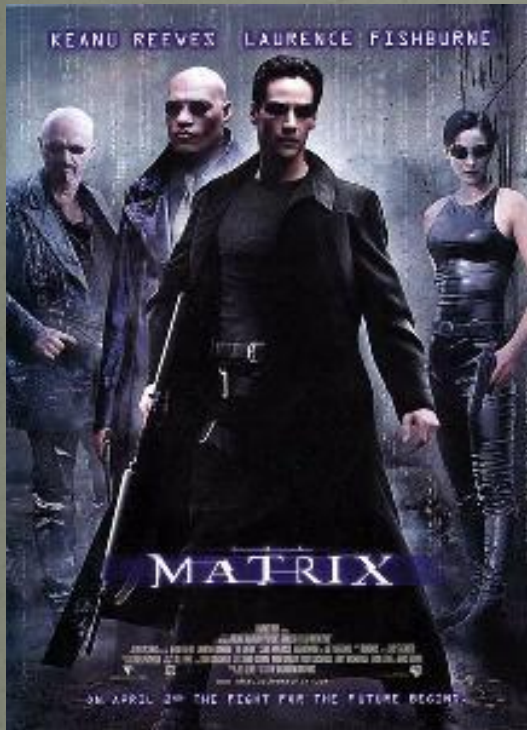
emu



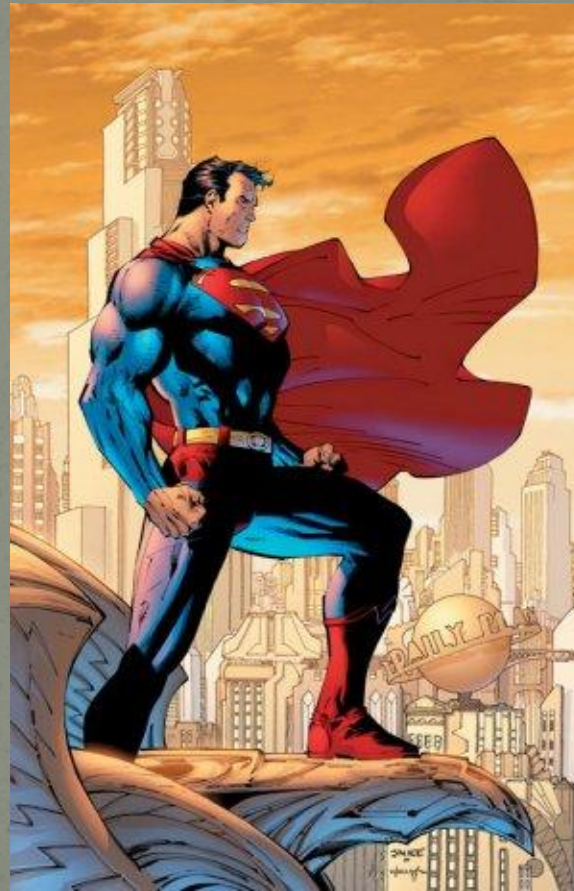
dingo

The Australian Cinema industry

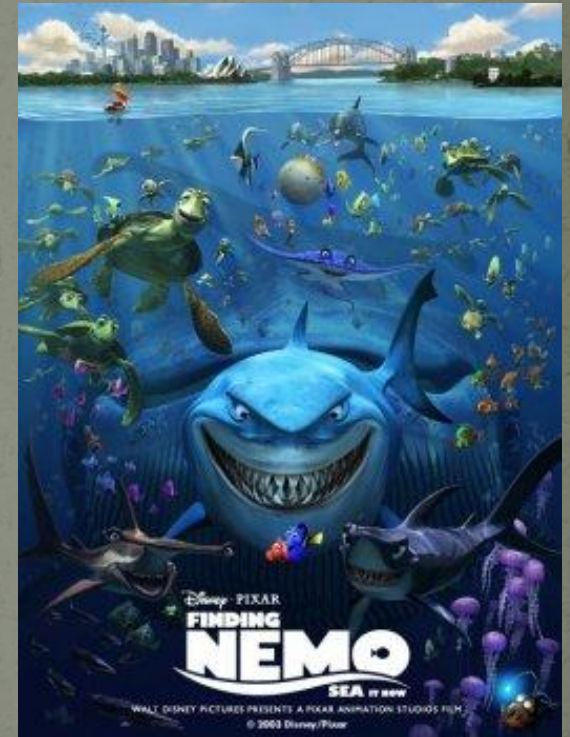
A lot of famous films were produced in Australia, such as, Peter Pan



The Matrix



Superman Returns



Finding Nemo

Well-known Australian actors include:

Russell Crowe



Cate Blanchett



Nicole Kidman



Geoffrey Rush

Fill in the gaps

1. Australia is a country in...
2. ... on the flag of Australia represents the historical link with Britain.
3. ... represents the six States.
4. The small stars form ... - a prominent feature of the southern hemisphere night sky.
5. The supporters on Australia's coat of arms are ...
6. Human habitation of Australia begun ... years ago.
7. The first navigator who sailed along coasts of Australia and mapped them was ...
8. ... is the home of Australia's government. The centrepiece of the city is ...
9. ... is the largest and oldest city in Australia.
10. ... is the Culture Capital of Australia.
11. Koala, possum, tasmanian devil, kangaroo, emu and dingo are well-known Australian ...

What is it and where is it located?





rla.pic-vn3313722-v



Answer the questions

1. Where is Australia located?
2. How does the flag of Australia look like?
3. Describe the Australian coat of arms?
4. Who are the Australian natives?
5. Tell about the discovery of Australia?
6. What is the capital of Australia?
7. What do you know about Canberra?
8. Which Australian capital cities do you know?
9. What do you know about Sydney? Melbourne?
10. Which are popular Australian animals?
11. What do you know about Australian cinema industry?
12. Which Australian actors do you know?